



WOODFORD ESTATES

VISIT US AT VIRGINIABUILDERS.COM OR CALL AT (757) 869-1141

WELCOME TO WOODFORD ESTATES

SINGLE-FAMILY HOMES | 1457 S BATTLEFIELD BLVD

Located in the heart of the Hickory community in Chesapeake, by Virginia Builders is a charming enclave with tree-lined streets, a neighborhood park, and expansive yards. With easy access to the 168 by-pass and proximity to surrounding communities like Great Bridge and Hanbury, as

well as cities like Virginia Beach and Downtown Norfolk, it's a prime yet peaceful location. Our spacious lots range from 15,000 square feet (over $\frac{1}{3}$ of an acre) up to 18,000 square feet, ensuring the perfect space for your dream home.



Large lots up to
18,000 square feet

Enjoy community gatherings
at the outdoor gazebo

Tree-lined streets

Community playground

Highly-ranked Chesapeake
Public Schools



MODEL HOME

Take a tour



SCAN & EXPLORE

View updated available homes



DESIGN. DEVELOP. BUILD.



THE COCO FLOORPLAN AT WOODFORD ESTATES



CONTACT OUR SALES TEAM

757-869-1141

WWW.VIRGINIABUILDERS.COM

Wainwright
REAL ESTATE
A Virginia Brokerage

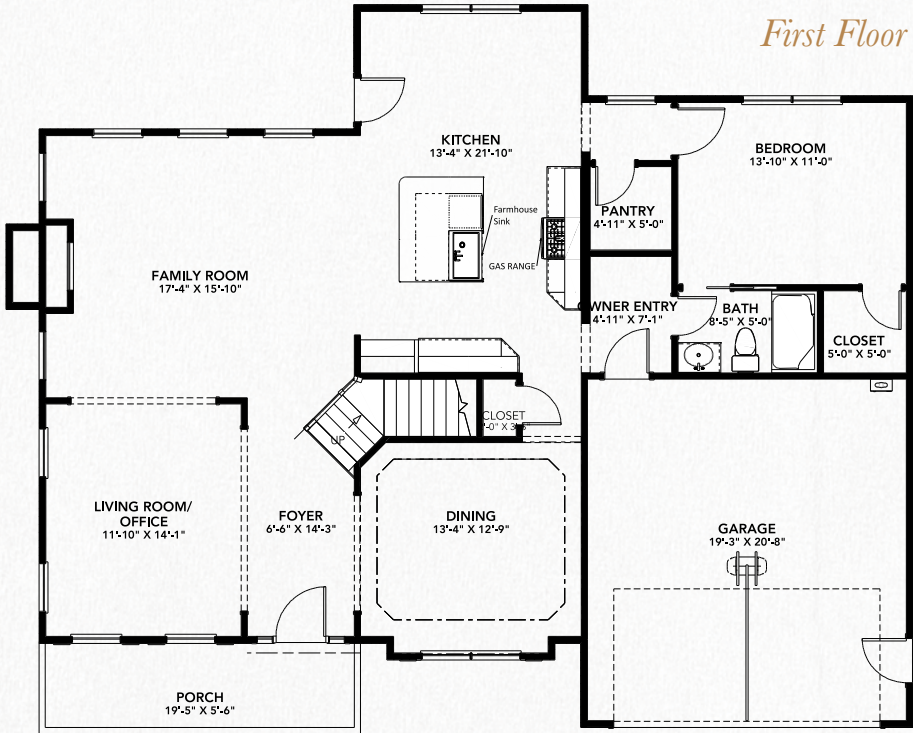
OLD POINT
NATIONAL BANK

Atlantic Bay
Mortgage Group



*Rendering May Contain Upgraded Features.
See Sales Associates For Details*

STANDARD FLOORPLAN

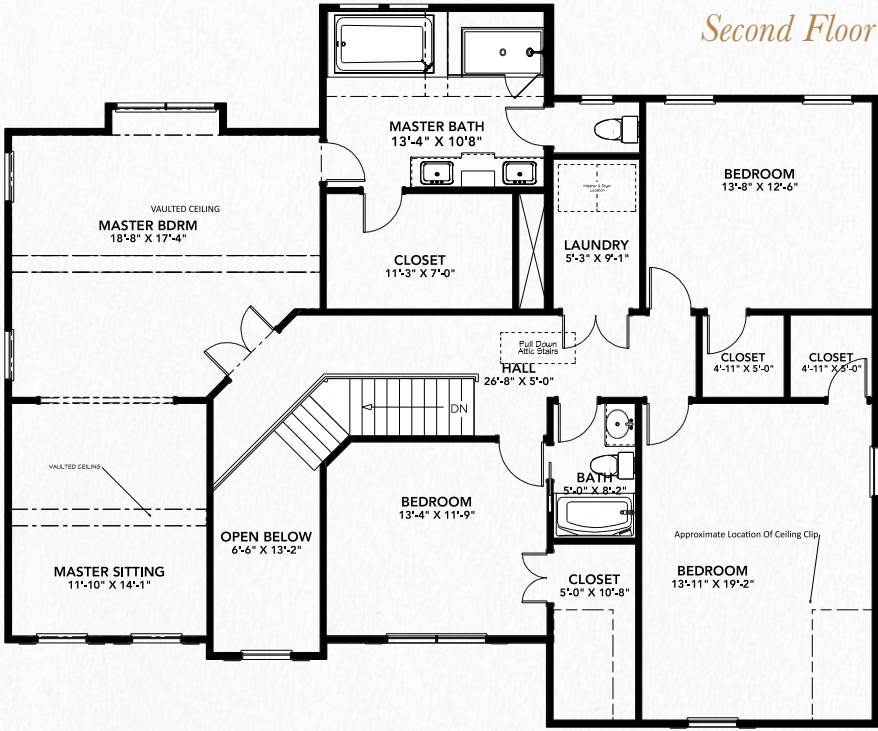


At a Glance

3,374 - 4,419 Cond. SQFT	3-6 Baths
5-8 Beds	2-3 Car Garage
Owner Up/Down	2-3 Stories

Optional Upgrades

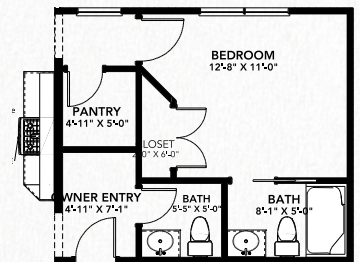
3rd Car Garage	Jack & Jill Bathroom
Sideloading Garage	Wrapped Porch
First Floor 1/2 Bath	Rear Covered Porch
Multi Gen / Owner Down Option with Guest Suite	Third Floor



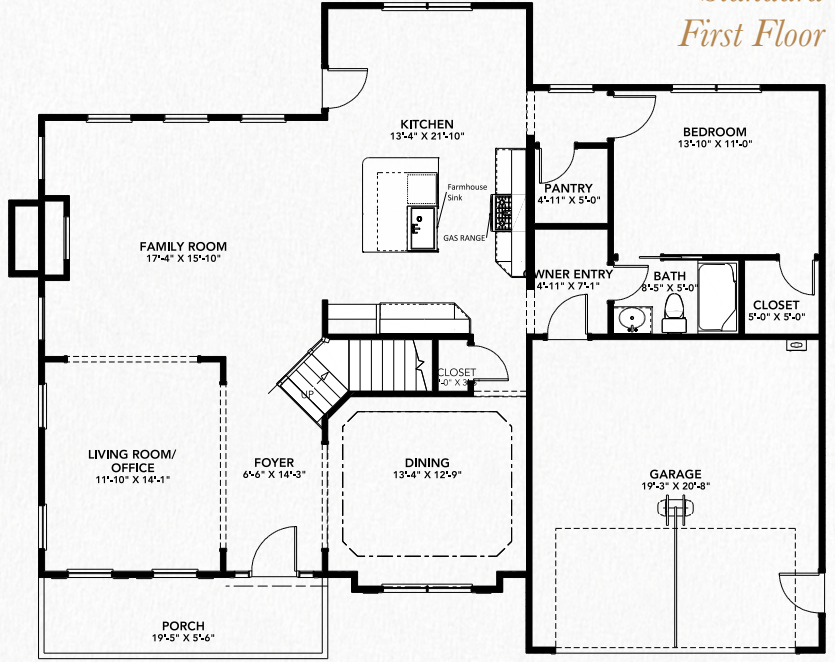
FIRST FLOOR OPTIONS

UPGRADES AVAILABLE

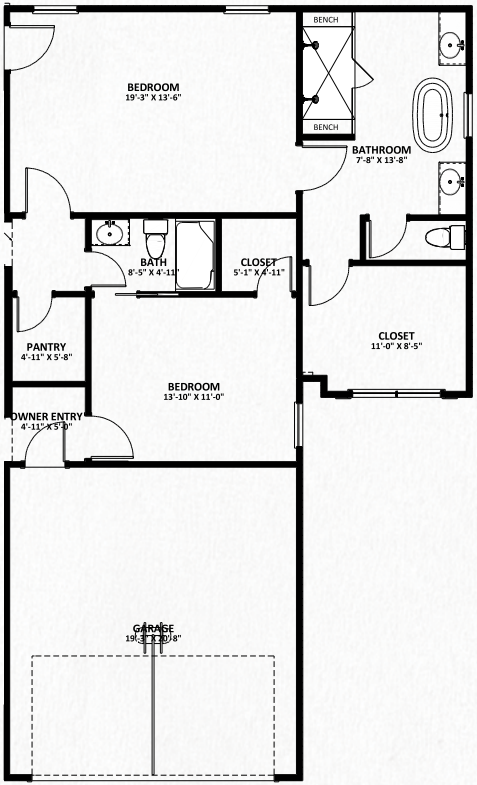
Additional 1/2 Bath



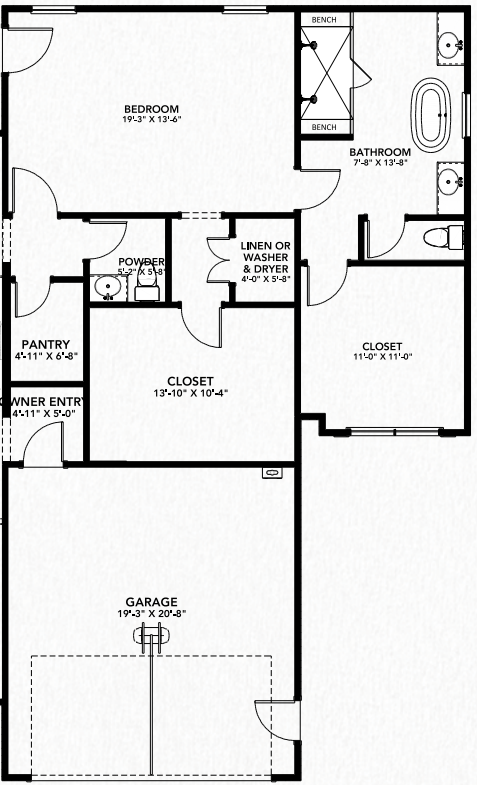
Standard
First Floor



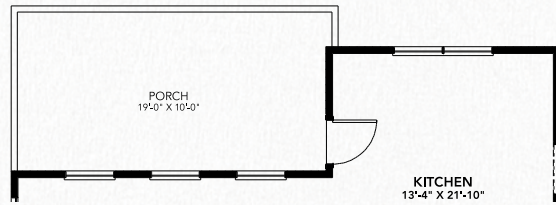
Multi Gen / Owner Down
Option with Guest Suite



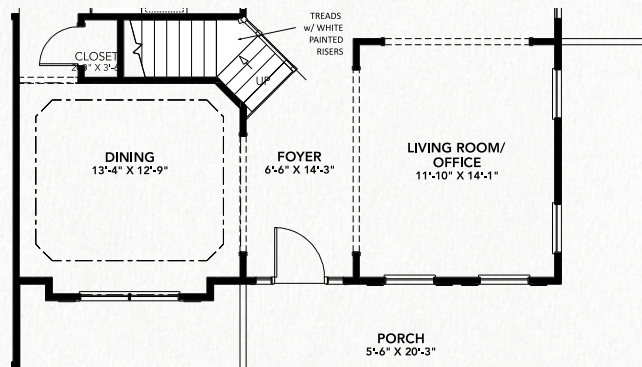
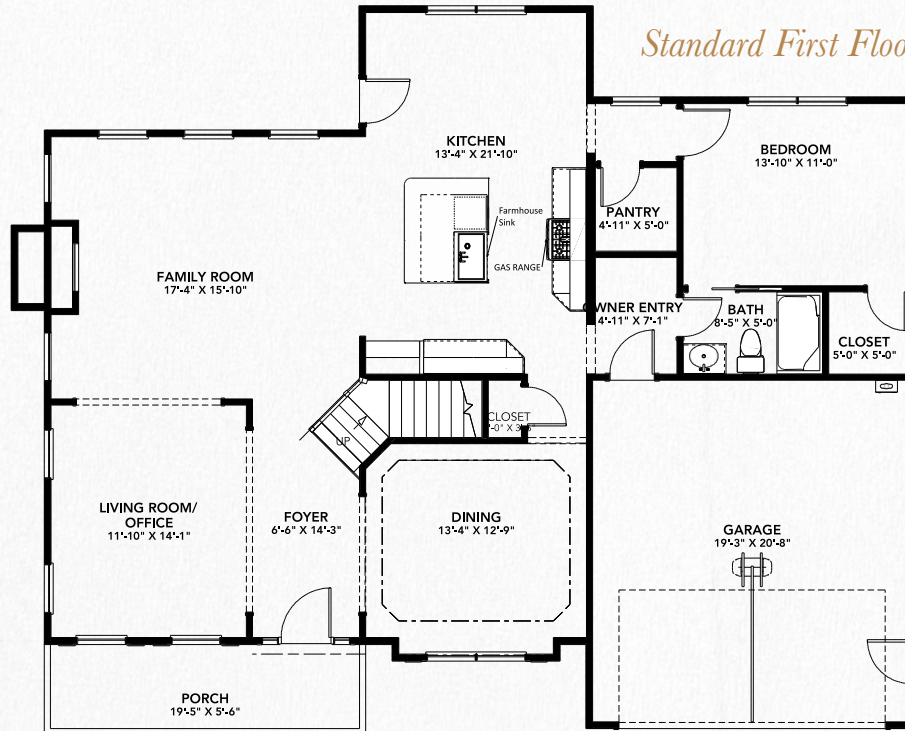
Multi Gen / Owner
Down Option



Rear Covered Porch Option



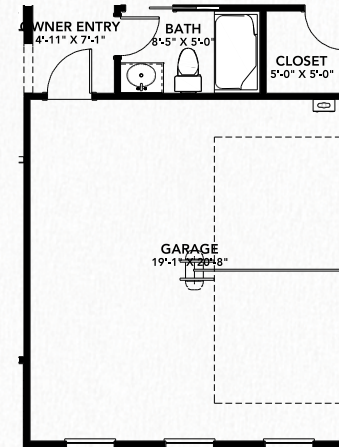
Standard First Floor



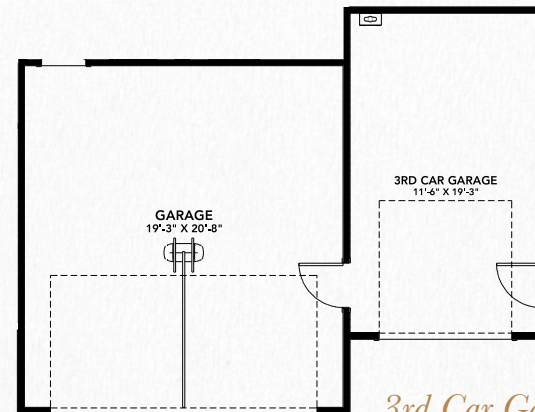
Wrap Around Porch Option

FIRST FLOOR OPTIONS

UPGRADES AVAILABLE



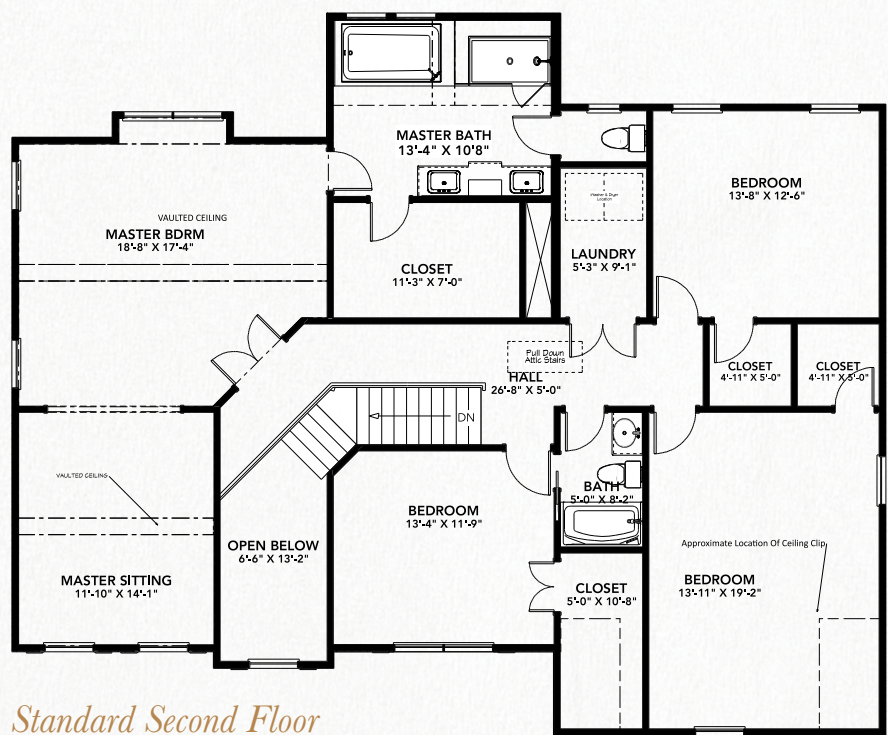
Sideload Garage Option



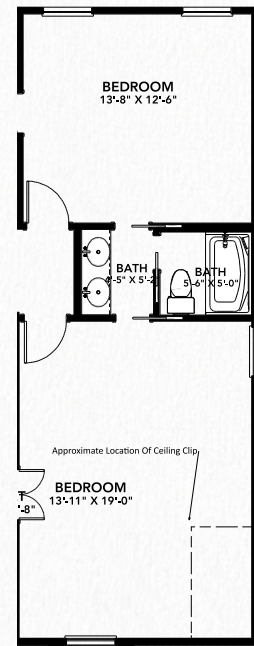
3rd Car Garage Option

SECOND FLOOR OPTIONS

UPGRADES AVAILABLE



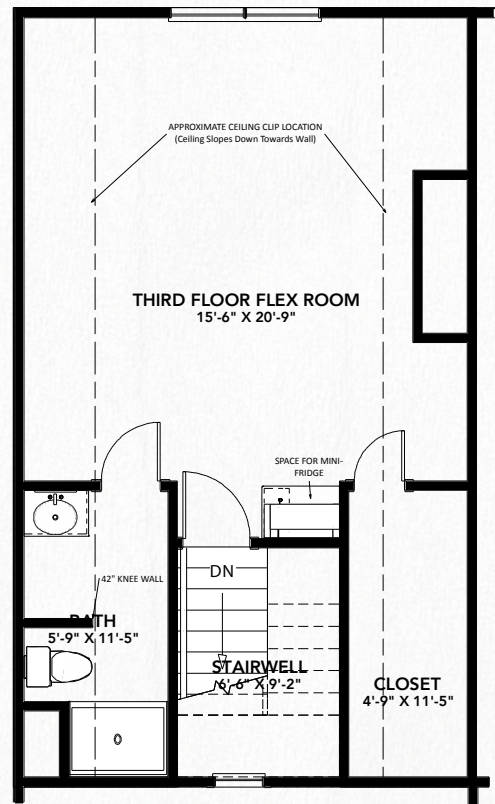
Standard Second Floor



Jack & Jill Bathroom

THIRD FLOOR OPTION

UPGRADES AVAILABLE





THE JACKSON FLOORPLAN
AT WOODFORD ESTATES



CONTACT OUR SALES TEAM

757-869-1141

WWW.VIRGINIABUILDERS.COM



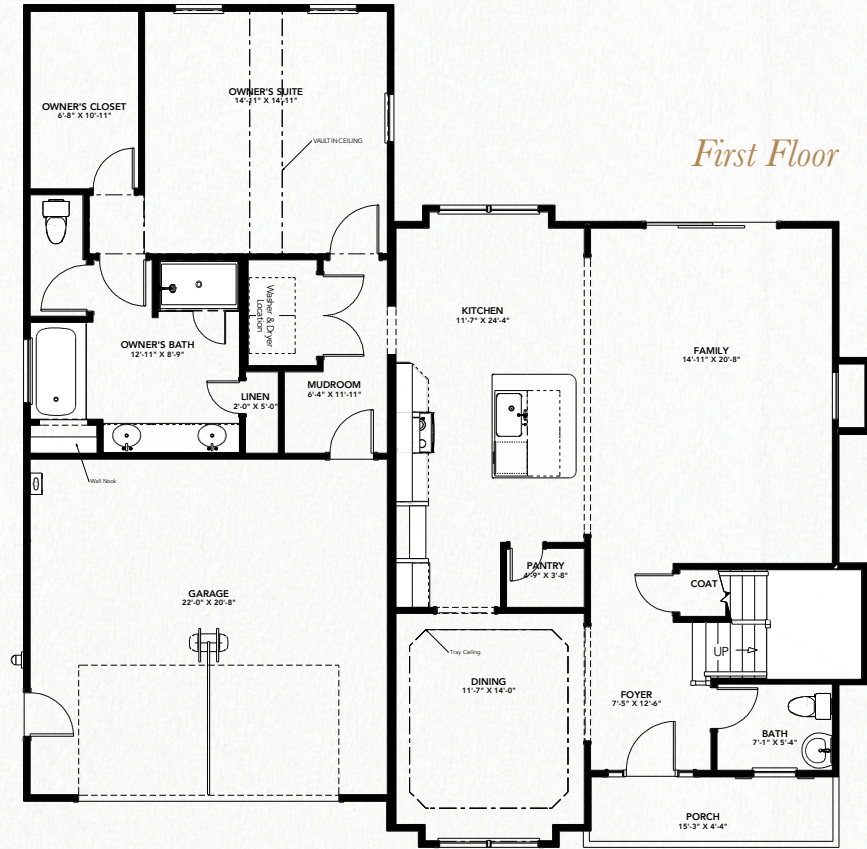
Rendering May Contain Upgraded Features.
See Sales Associates For Details

STANDARD FLOORPLAN

At a Glance

2,992-3,171 Cond. SQFT	2.5-5 Baths
5-6 Beds	2-3 Car Garage
Owner Down	2 Stories

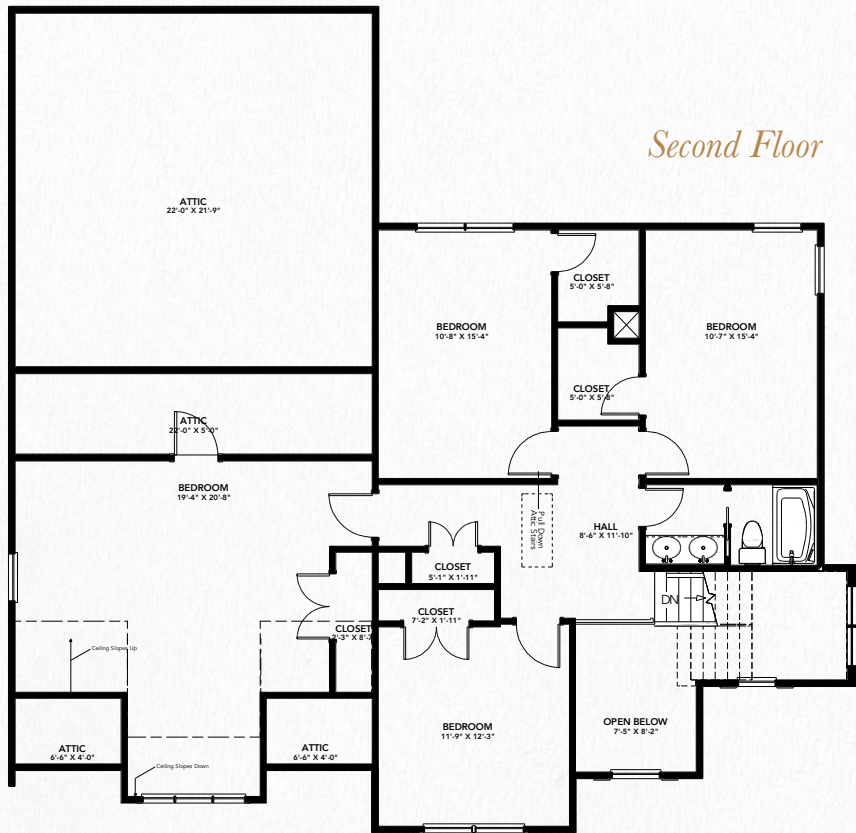
First Floor



Optional Upgrades

- | | |
|--|----------------------|
| 3rd Car Garage | Jack & Jill Bathroom |
| Sideload Garage Option | Rog Bathroom Option |
| First Floor Guest Suite & Optional Dining Room | Rear Covered Porch |

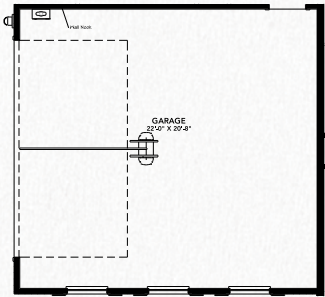
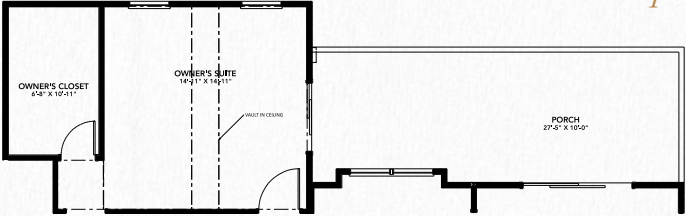
Second Floor



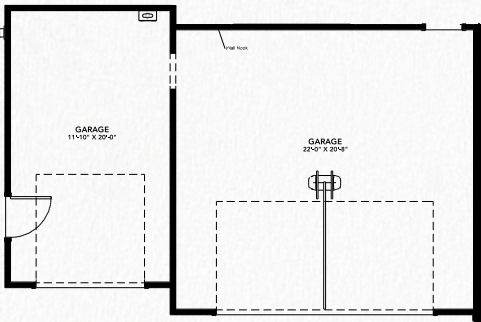
FIRST FLOOR OPTIONS

UPGRADES AVAILABLE

Rear Covered Porch Option

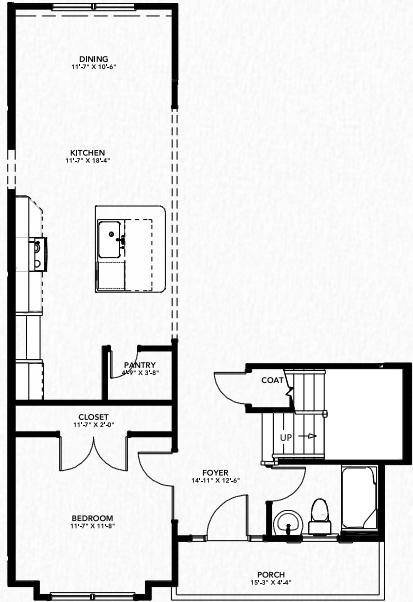
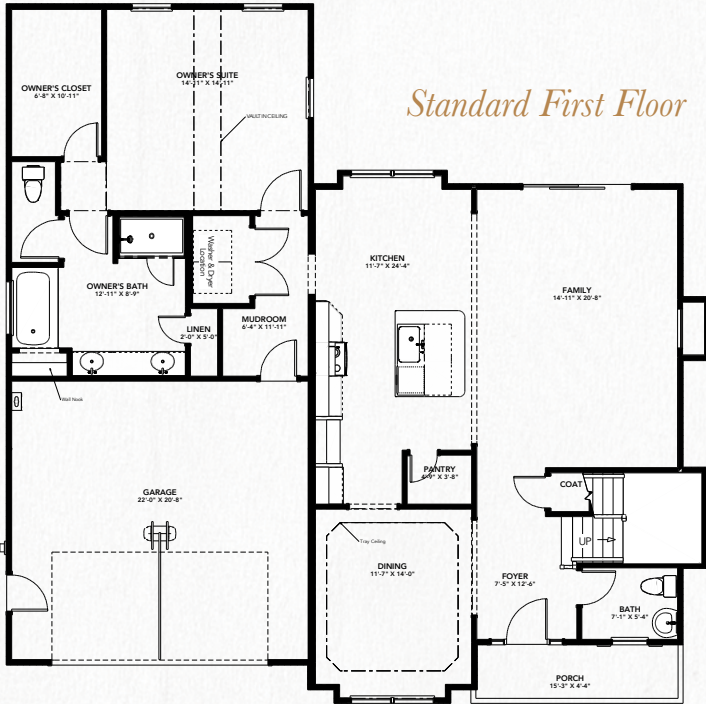


Sideload Garage Option



3rd Car Garage Option

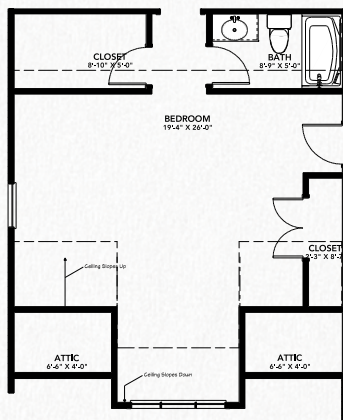
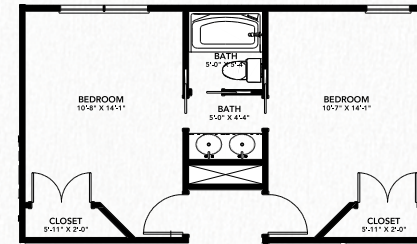
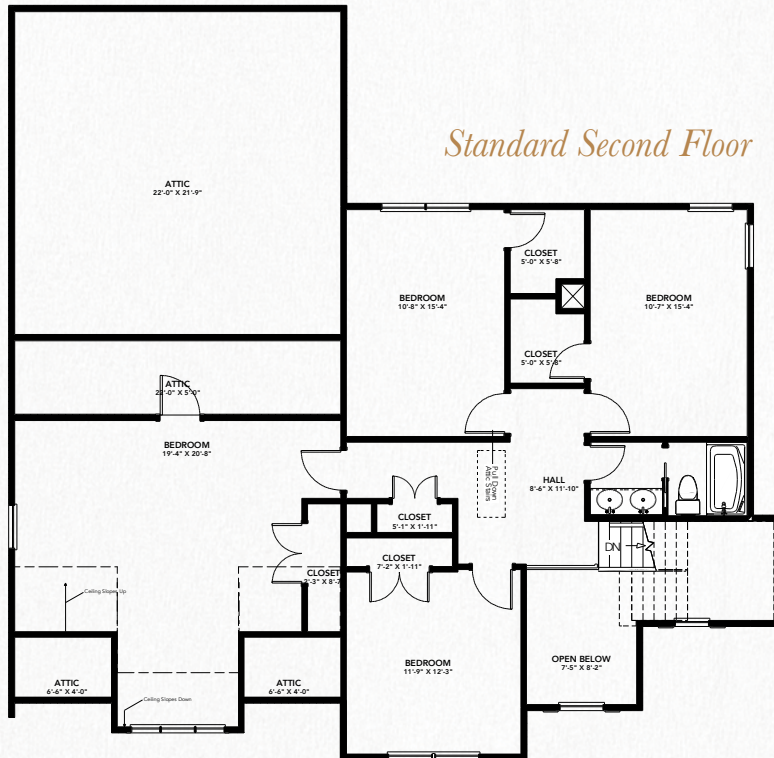
Standard First Floor

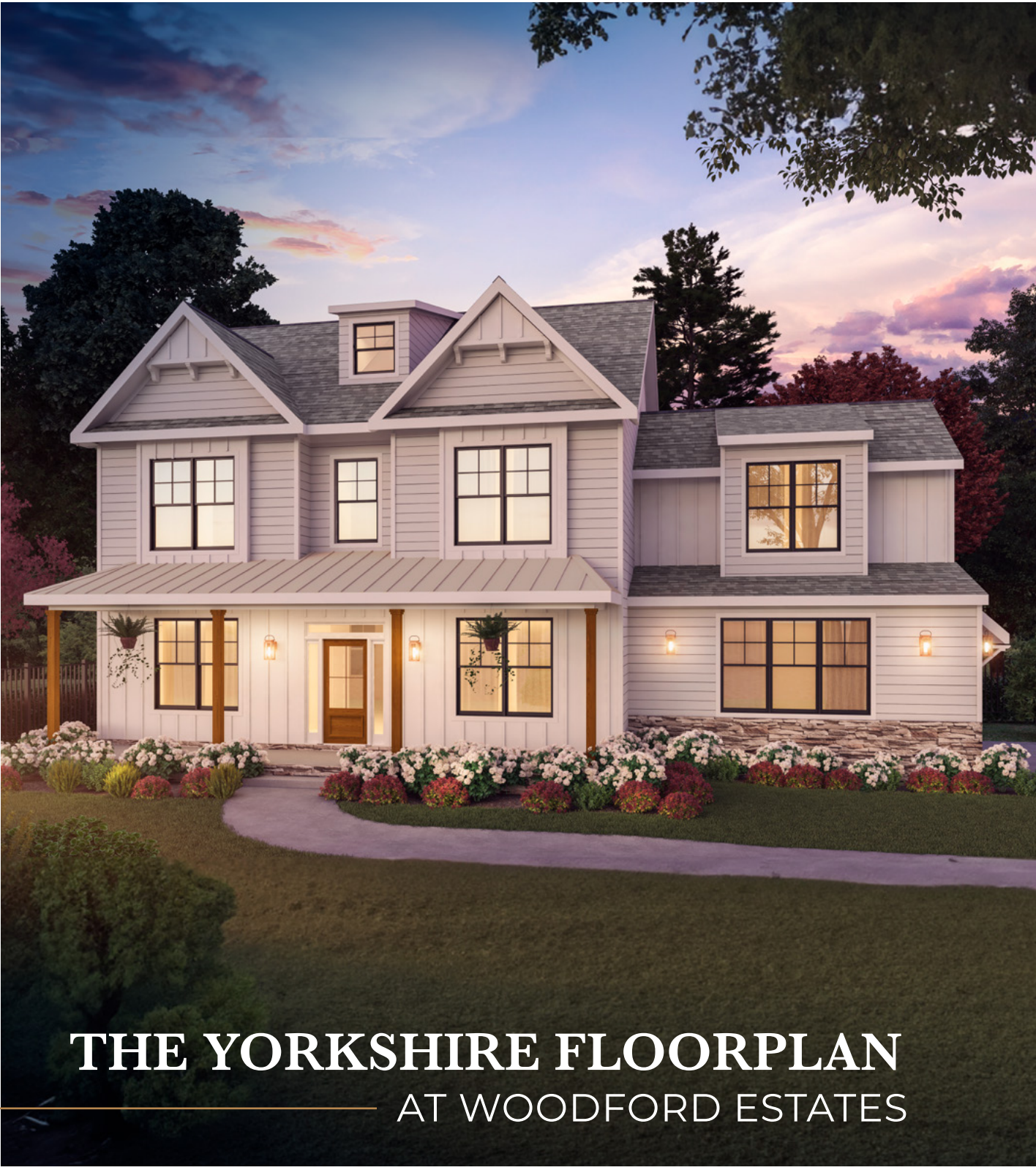


*First Floor Guest Suite Option
& Optional Dining Room*

SECOND FLOOR OPTIONS

UPGRADES AVAILABLE





THE YORKSHIRE FLOORPLAN

AT WOODFORD ESTATES

CONTACT OUR SALES TEAM

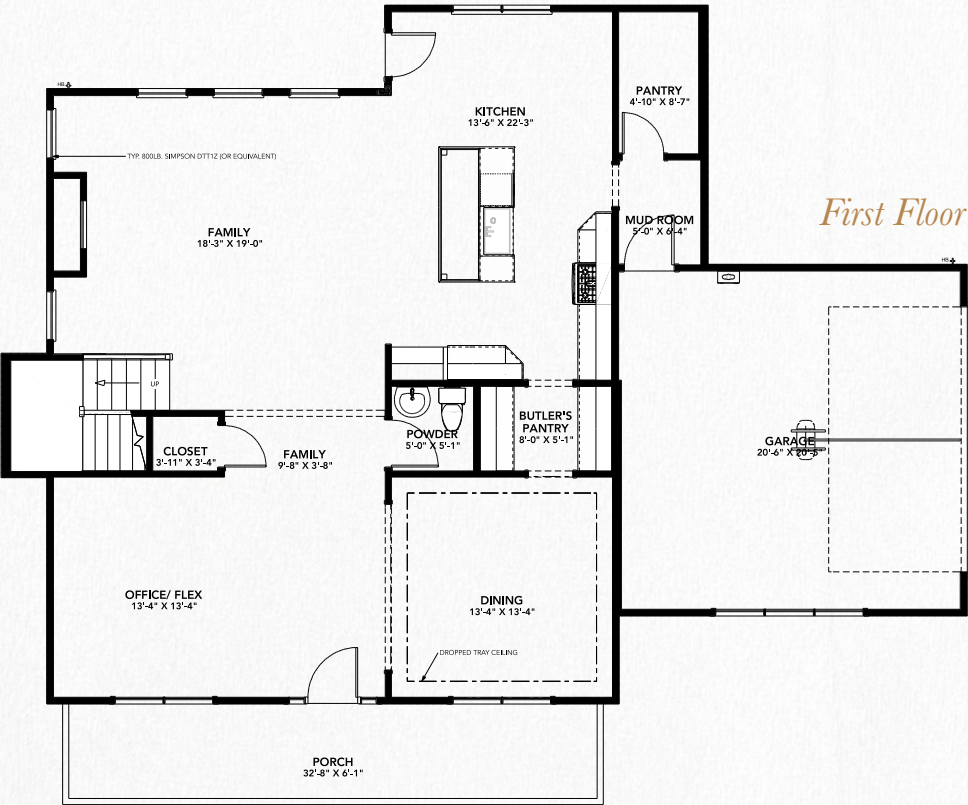
757-869-1141

WWW.VIRGINIABUILDERS.COM



*Rendering May Contain Upgraded Features.
See Sales Associates For Details*

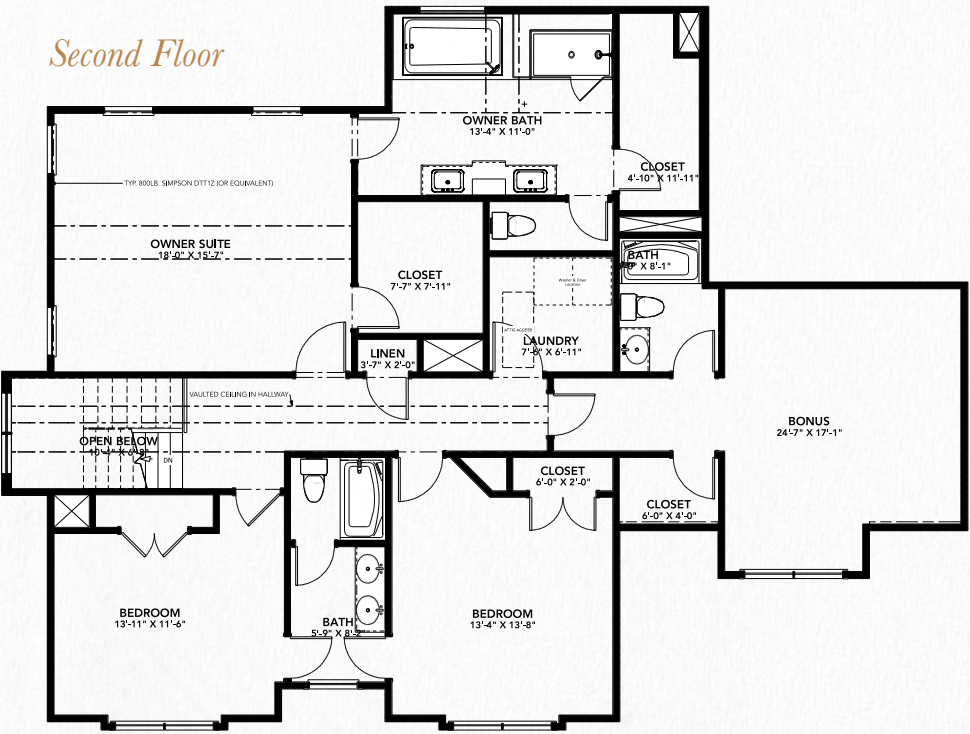
STANDARD FLOORPLAN



At a Glance

3,252-3,542 Cond. SQFT	3.5-4.5 Baths
4-5 Beds	2 Car Garage
Owner Up	2 Stories

Second Floor

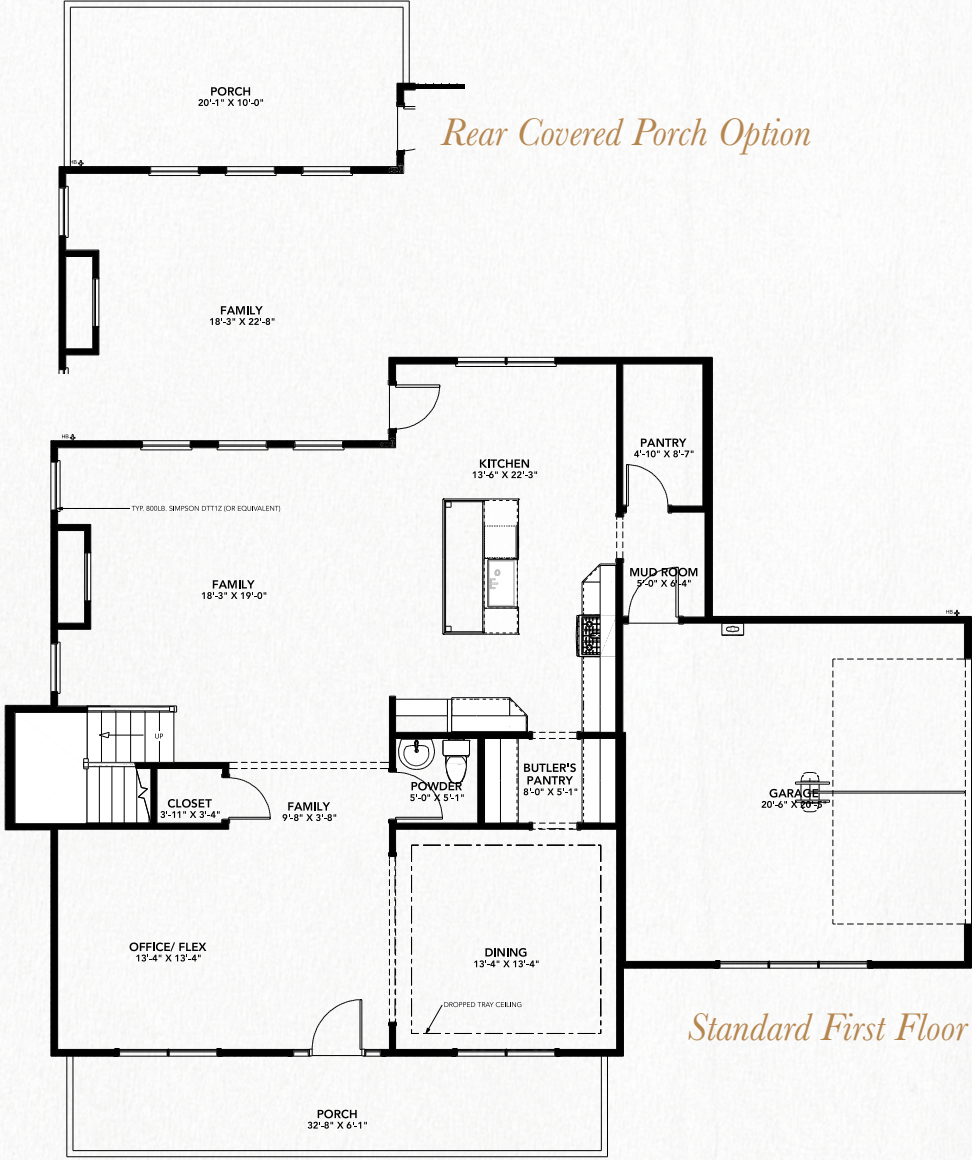


Optional Upgrades

- Office/Flex Room
- Bed Down Option
- Rear Covered Porch

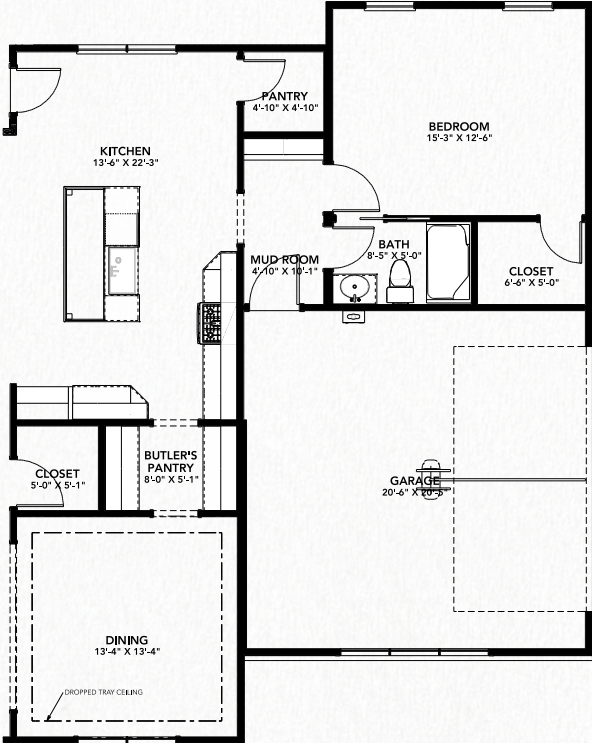
FIRST FLOOR OPTIONS

UPGRADES AVAILABLE



Rear Covered Porch Option

Bedroom Down Option

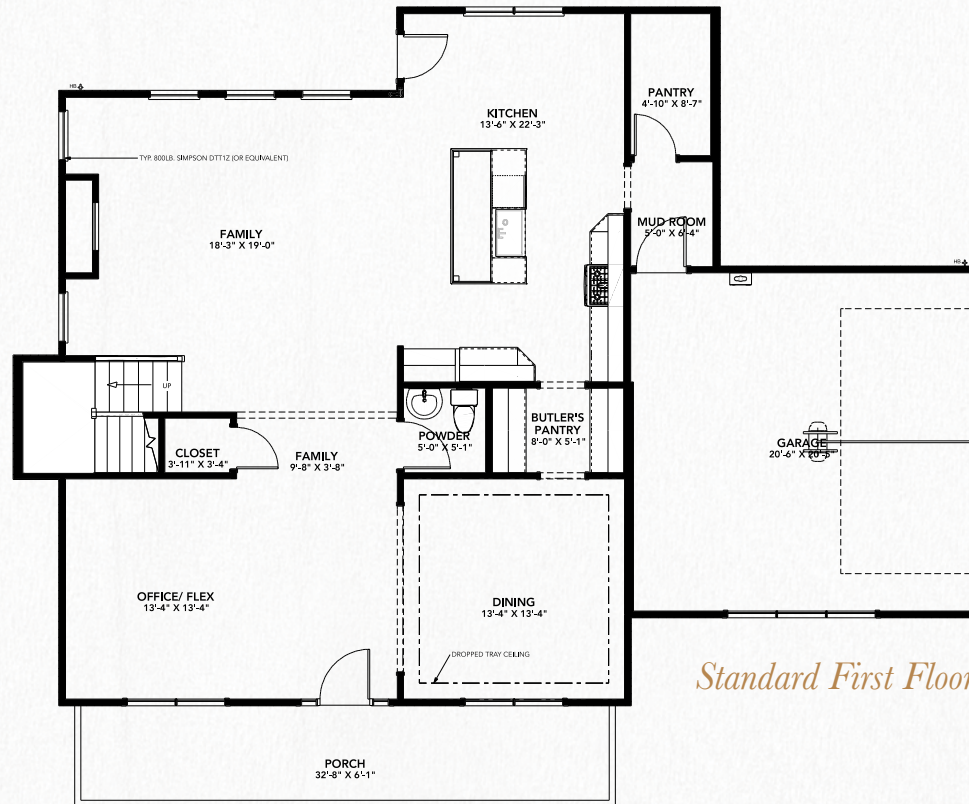
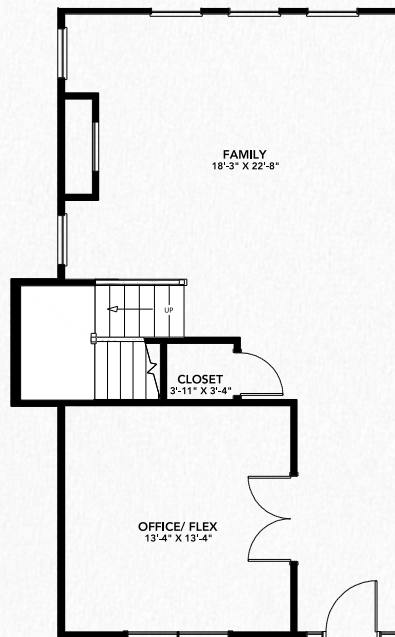


Standard First Floor

FIRST FLOOR OPTIONS

UPGRADES AVAILABLE

Office/Flex Room Option



Standard First Floor



THE BELMONT PLACE FLOORPLAN

AT WOODFORD ESTATES

CONTACT OUR SALES TEAM

757-869-1141

WWW.VIRGINIABUILDERS.COM

Wainwright
REAL ESTATE
A Virginia Brokerage

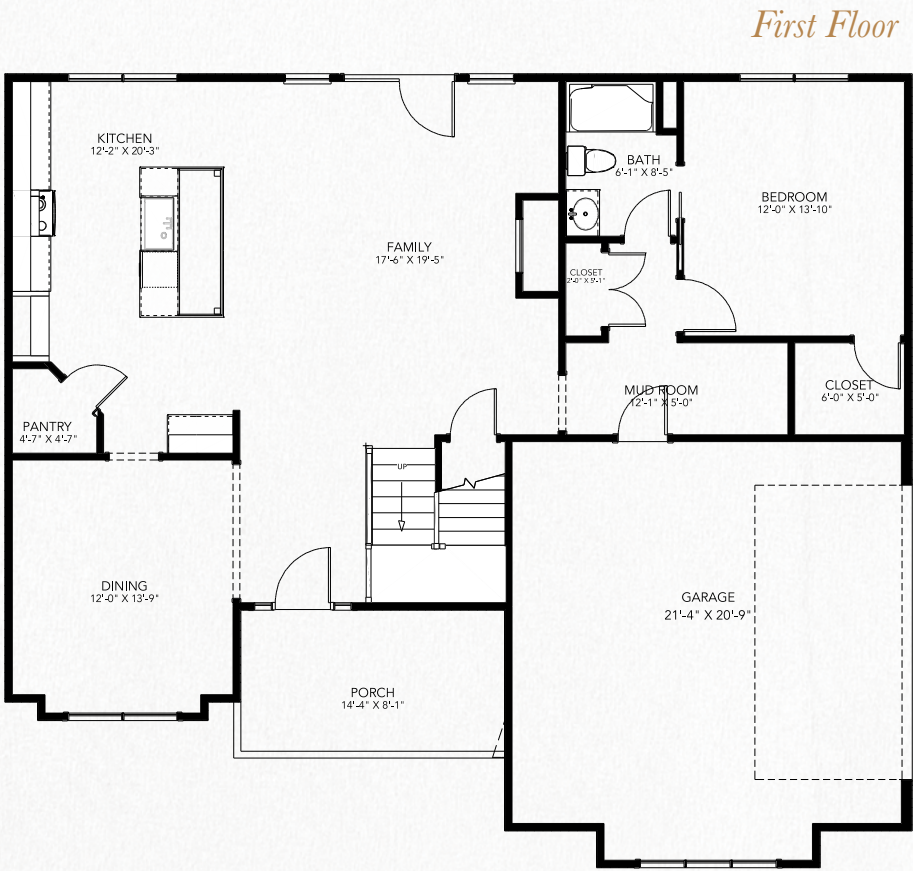
OLD POINT
NATIONAL BANK

Atlantic Bay
Mortgage Group



*Rendering May Contain Upgraded Features.
See Sales Associates For Details*

STANDARD FLOORPLAN



Optional Upgrades

Sun Room Option

Rear Porch Option

3rd Car Option

1/2 Bath Option

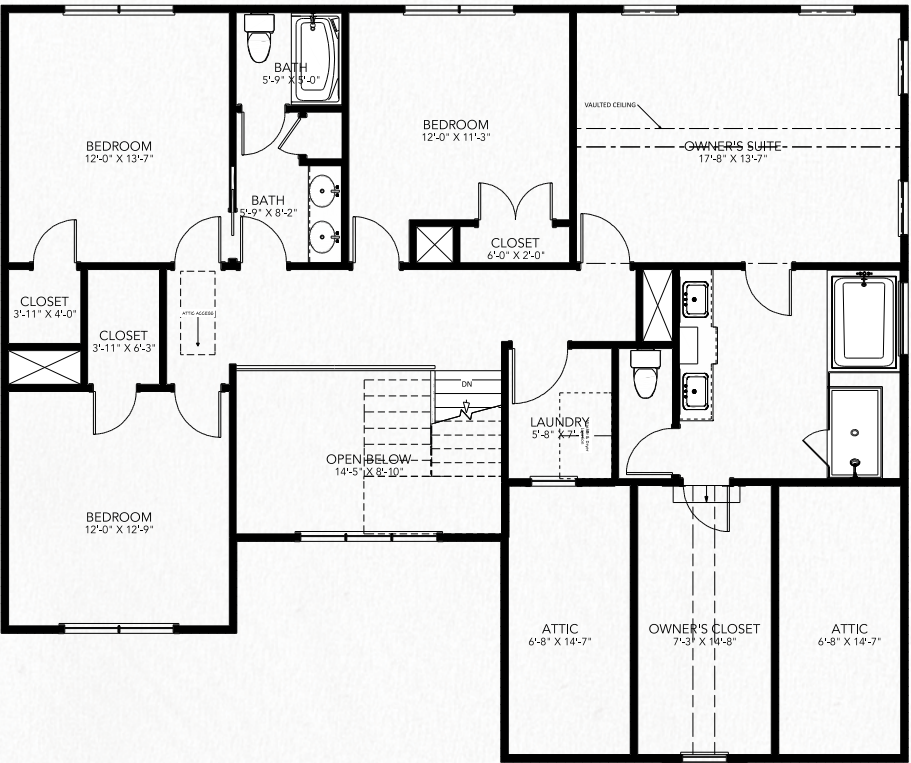
At a Glance

2,843-2,975 Cond. SQFT 3-3.5 Baths

5 Beds 2-3 Car Garage

Owner Up 2 Stories

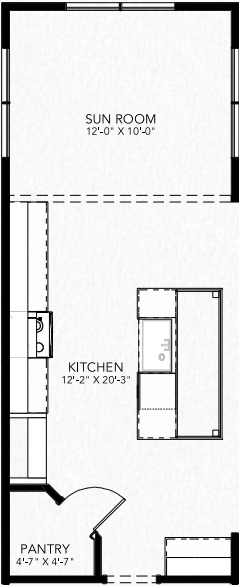
Second Floor



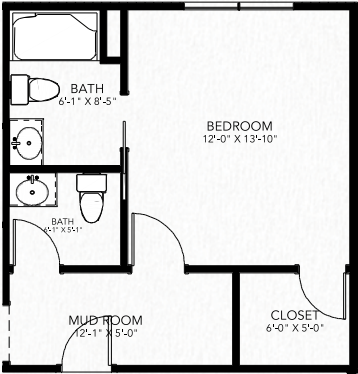
FIRST FLOOR OPTIONS

UPGRADES AVAILABLE

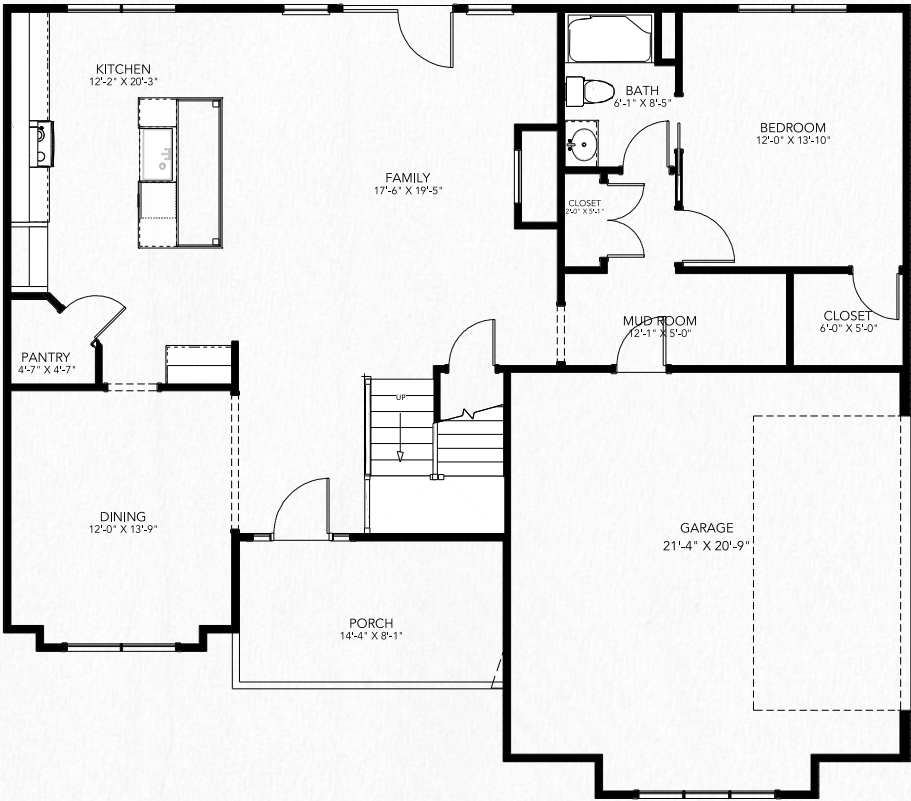
Sun Room Option



1/2 Bath Option



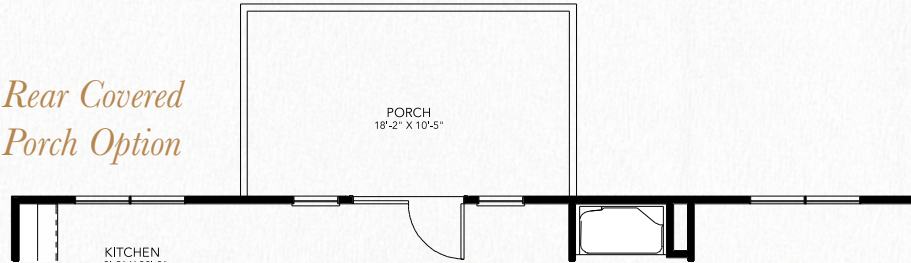
Standard First Floor



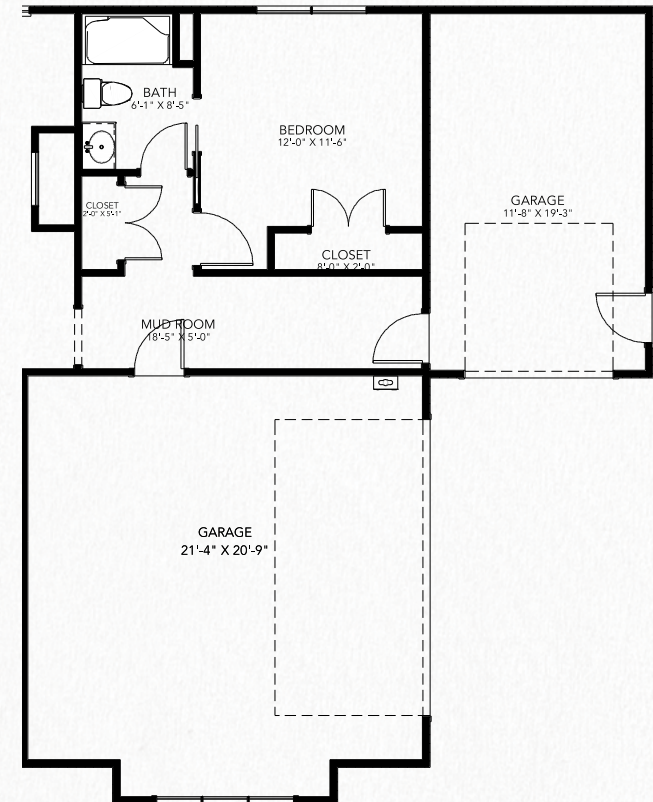
FIRST FLOOR OPTIONS

UPGRADES AVAILABLE

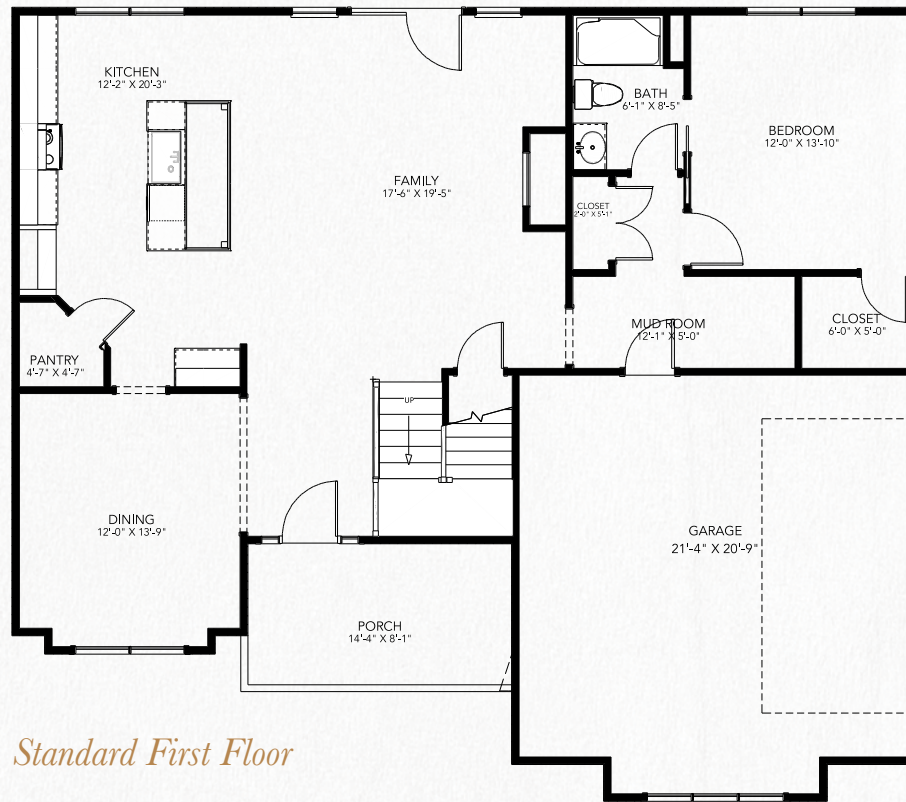
*Rear Covered
Porch Option*



3rd Car Option



Standard First Floor





THE AVA FLOORPLAN

AT WOODFORD ESTATES



CONTACT OUR SALES TEAM

757-869-1141

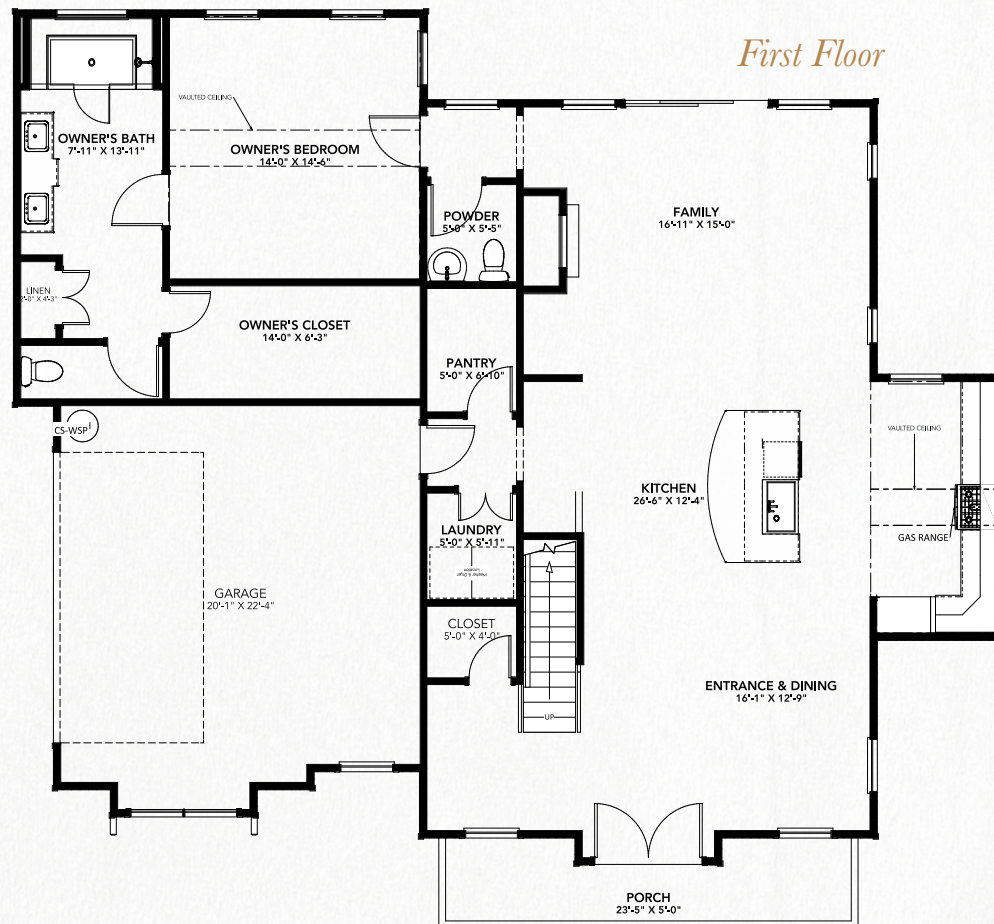
WWW.VIRGINIABUILDERS.COM



*Rendering May Contain Upgraded Features.
See Sales Associates For Details*

STANDARD FLOORPLAN

THREE BED VERSION



Optional Upgrades

Fireplace Cabinets

Mudroom Cabinets

Rear Covered Porch

Upgraded Owner's Bath

At a Glance

2,592 Cond. SQFT

2.5 Baths

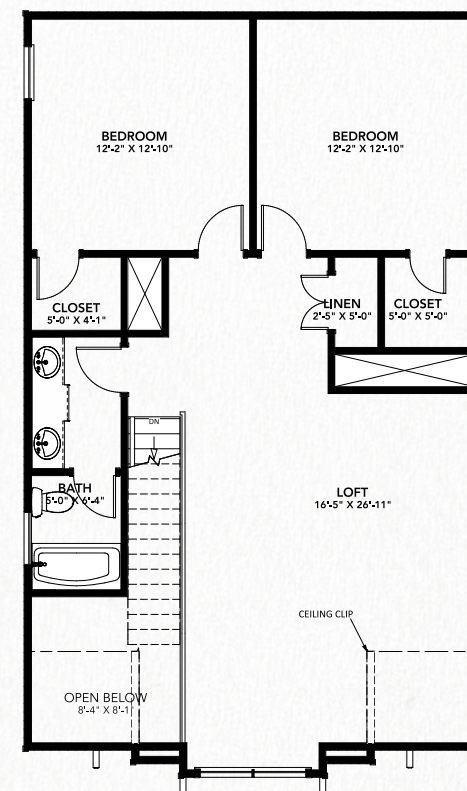
3-4 Beds

2 Car Garage

Owner Down

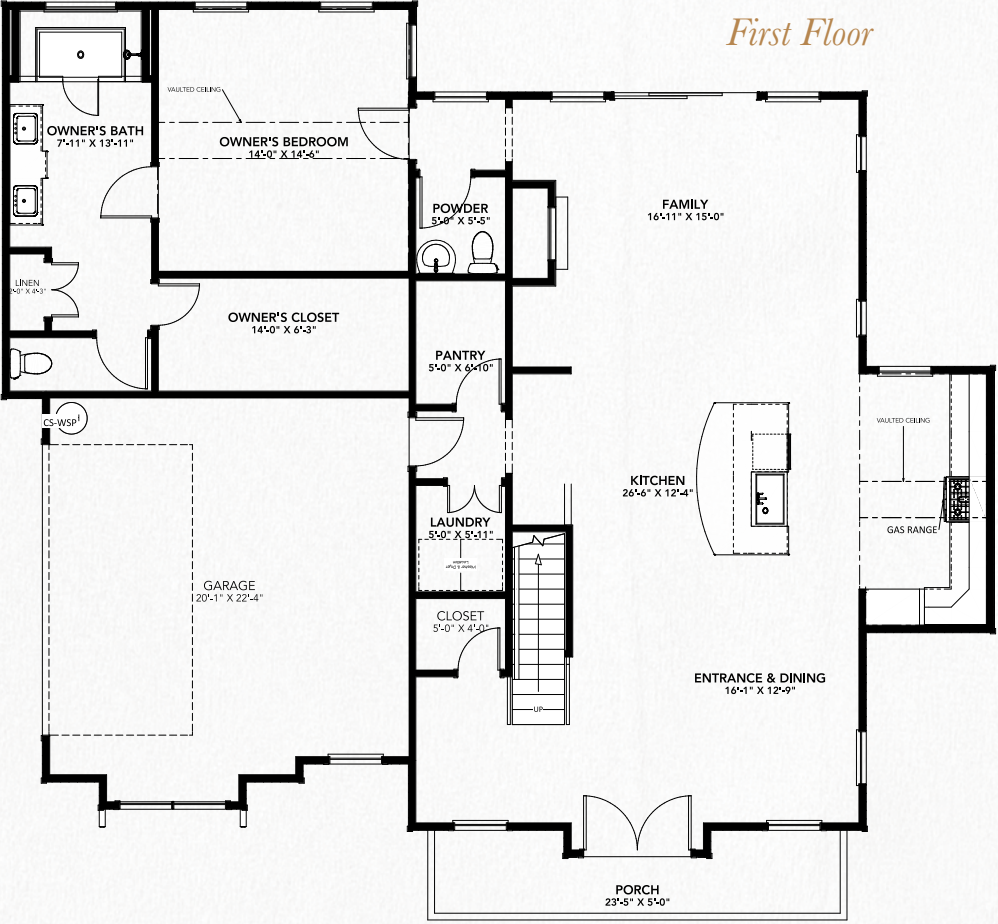
2 Stories

Second Floor with 2 Beds and Larger Loft

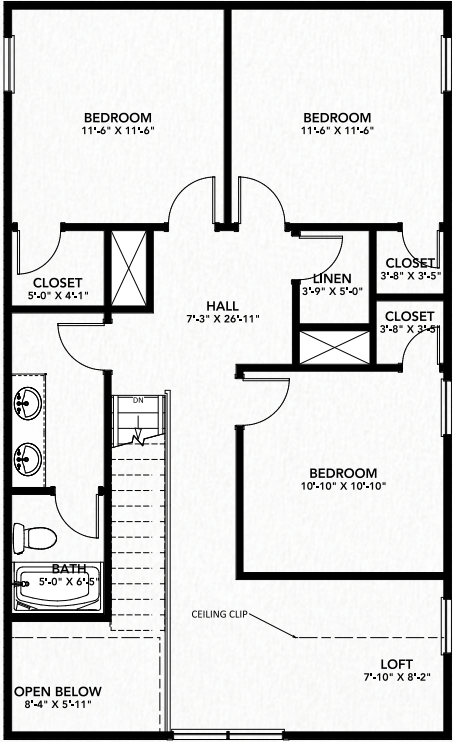


STANDARD FLOORPLAN

FOUR BED VERSION



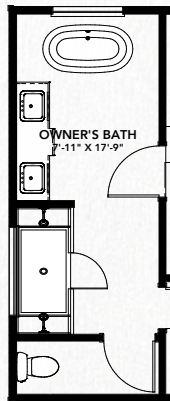
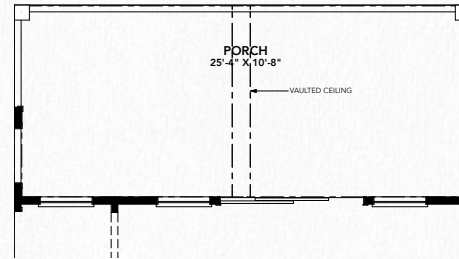
Second Floor with 3 Beds and Smaller Loft



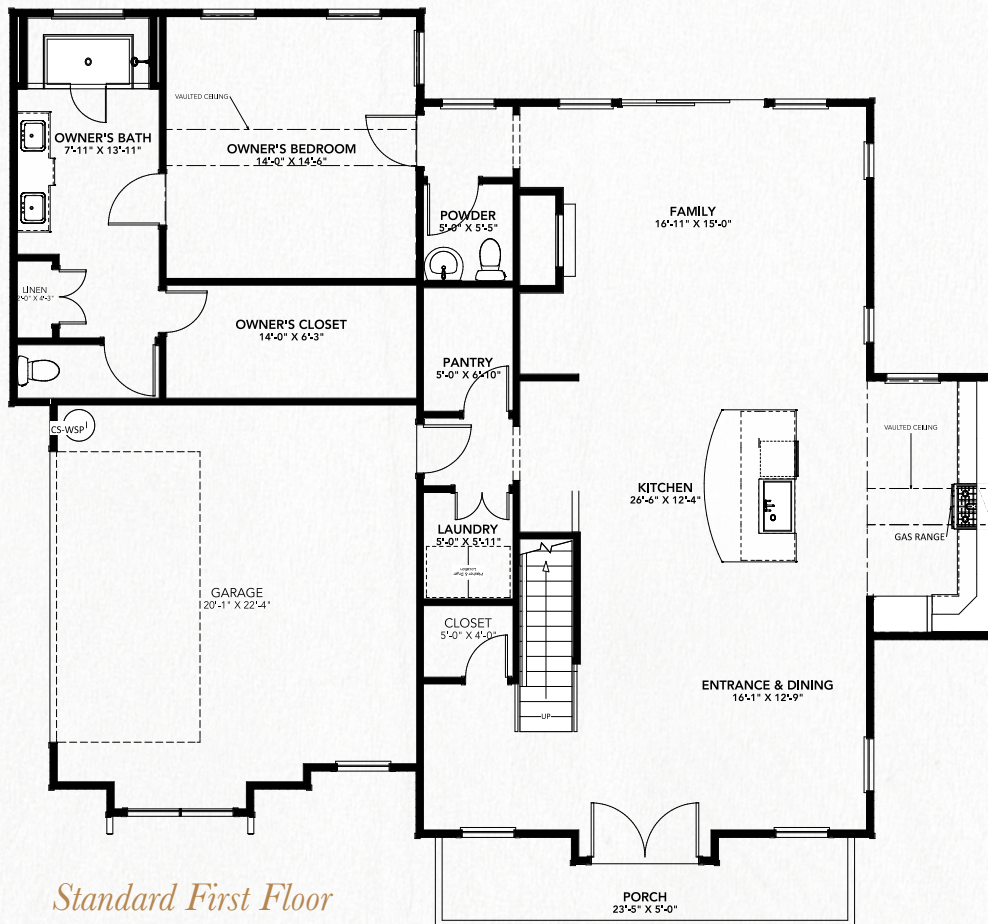
FIRST FLOOR OPTIONS

UPGRADES AVAILABLE

*Rear Covered
Porch Option*

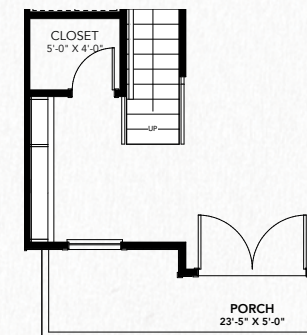
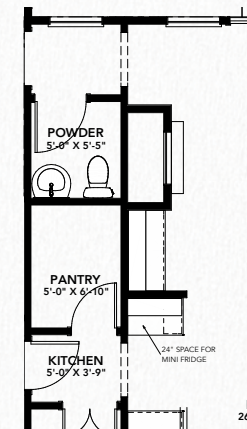


*Upgraded
Owners Bath*



Standard First Floor

Fireplace Cabinets



Mudroom Cabinets

YOUR HOME, YOUR CANVAS

CUSTOMIZING A FLOORPLAN TO MEET YOUR NEEDS

We believe that every home should be a canvas, reflecting the dreams and aspirations of its owner. Your home should not just be a structure; it should be a testament to your unique flair, aspirations, and way of life. It should be designed to suit your family's needs today and adapt to your ever-changing life.

Our boutique approach sets us apart. We're not about mass production; we're about meaningful connections. Dive deep into customization with options like additional storage spaces, expansive rooms, gourmet kitchens, and unique architectural elements tailored to your preferences. Whether you envision a sunlit reading nook, a spacious walk-in closet, or a state-of-the-art home office, we're here to make it happen.

Every foundation we set, every detail we craft is a step towards bringing your vision to life. Turning every corner, every space into a reflection of your dreams.

With Virginia Builders LLC, we don't just construct homes; we shape dreams, piece by piece. Design. Develop. Build.



“From the moment I stepped into Woodford Estates, I felt a connection. Finally, a large lot subdivision in Hickory! The sales staff at Virginia Builders worked with my family to customize our floor-plan to become a dream home. It’s not just a house; it’s a home tailored just for me.”







WOODFORD ESTATES

VISIT US AT VIRGINIABUILDERS.COM OR CALL AT (757) 869-1141



Some features may apply only to certain models or sizes may vary - please see agents for details. Builder reserves the right to substitute or changes on in all model types, prices, site plans, floor plans, materials and specifications and they are subject to change without notice. Actual home may vary from renderings and floorplans, the model or other homes. All standard selections to be made from builder's elected standards. All square footages listed area approximate and may vary from home to home. Photo similar. May contain additional upgrades not included in current promotion. Please see Sales Associate for more details.