



STANDARDS & FLOORPLANS



Contact Our Sales Team
757-689-7075
www.summitconstructionvirginia.com



TOWNEBANK
MORTGAGE



Some features may apply only to certain models or sizes may vary- please see agents for details. Builder reserves the right to substitute or changes on in all model types, prices, site plans, floor plans, materials and specifications and they are subject to change without notice. Actual home may vary from renderings and floorplans, the model or other homes. All standard selections to be made from builder's elected standards. All square footages listed area approximate and may vary from home to home. Photo similar. May contain additional upgrades not included in current promotion. Please see Sales Associate for more details

REV022218

THE CROWN SERIES

Coco, Jackson & Myrtle Floorplans



Exterior Detailing

- Maintenance Free Vinyl Siding
- Raised Solid Foundation with Brick Skirt On Front Elevation (Full Skirts In Albemarle River)
- Large Covered Front Porch
- Large Covered Rear Porch (on select models)
- Cambridge 30 Year Architectural Roof Shingles with Ridge Venting
- Raised Panel or Board & Batten Shutters on Front Windows
- Front & Rear Hose Bibs and Receptacles
- Decorative Raised Panel or Craftsman Style Garage Door* with Opener
- White Painted Porch Rails Installed As Required Per Code
- Vinyl Soffit
- Wrapped Exterior Trim
- Underground Utilities
- Sod Installed In Front Yard (Front Corners Of House To Curb)
- Security Deadbolts On Exterior Doors
- Broom Finished Concrete Patio

Flooring Surfaces

- Wide Plank Distressed Hardwood Installed Throughout First Floor (Excluding Bedrooms)
- Tile Flooring In Master Bathroom, Second Floor Bathrooms, and Laundry Room When On Second Floor
- Wall To Wall Carpeting In All Areas (Except Where Noted)

Custom Interior Finishes

- Designer Light Fixture Package
- Ceiling Fans Installed In Family Room, Master Bedroom, & Third Location
- Designer Trim Package: Includes Crown Molding Throughout First Floor & Second Floor Hallway (Excluding Bedroom, Garage Entry, Laundry, and/ or Bathroom), Wainscoting In Formal Dining Room & Master Bathroom
- Knockdown Texture Walls & Ceilings with Smooth Finish In Kitchen, Dining Room, & Baths
- 9' Ceilings First Floor
- Large Closets with Ventilated Shelving
- Washer & Dryer Hook Up Connections
- (1) Prewired HDMI & (4) Cat-6 Data Drops
- Granite Surround Gas Fireplace with Mantel
- Electrically Wired Smoke and CO Detectors with Battery Backup

Kitchen & Baths

- East Front Fully Maple Plywood Cabinets with Full Overlay Soft Close Doors, Full Extension Drawers, & 42" Upper Cabinets with Choice Of Finish
- 3cm Granite Installed In Kitchen & Master Bathroom Vanity
- Platform or Alcove Soaking Tub In Master Bathroom
- Oversized Tile Shower with Fiberglass Pan & Glass Enclosure In Master Bathroom
- Choice of Brushed Nickel or Bronze Lighting, & Cabinet Hardware
- Stainless Steel Kitchen Sink Faucet
- Chrome Finished Plumbing & Bathroom Hardware In All Bathrooms
- Adult Height Vanities In All Bathrooms
- Equal or Single Bowl Stainless Steel Sink
- Kenmore Stainless Steel Energy Star Appliance Package to Include: Smooth Top Free-Standing Electric Range, Built In Microwave with Vented Hood, & Dishwasher
- Large Kitchen Island
- Garbage Disposal
- Cultured Marble Tops In Secondary Bathrooms
- Easy Care Fiberglass Tubs/ Showers in Secondary Bathrooms
- Ground Fault Electrical Interrupter Circuits in Kitchen, Baths, & Exterior Receptacles

Energy Savings & Other Features

- Single Zone Gas Heat with 92% AFUE Rating
- Single Zone Central Air Conditioning (Dual depending on floorplan size)
- Programmable Thermostats
- Poly-seal Air Infiltration Barrier
- Low-E/ Argon Filled Double Pane Tilt-In Multi-Chambered Windows
- Low Flow Water Saving Plumbing Fixtures
- All Low Energy LED Light Bulbs
- R-15 Insulation In Walls (Excludes Exterior Garage Wall) & R-38 In Ceilings
- 50 Gallon Gas Water Heater
- Insulated Energy Efficient Fiberglass Exterior Doors
- Insulated R-9 Foam-Core Garage Door
- Exclusive One Year Builder Warranty
- 10 Year Structural Warranty
- Termite Soil Treatment

*With Craftsman Package



Contact Our Sales Team
757-689-7075
www.summitconstructionvirginia.com



Some features may apply only to certain models or sizes may vary- please see agents for details. Builder reserves the right to substitute or changes on in all model types, prices, site plans, floor plans, materials and specifications and they are subject to change without notice. Actual home may vary from renderings and floorplans, the model or other homes. All standard selections to be made from builder's elected standards. All square footages listed area approximate and may vary from home to home. Photo similar. May contain additional upgrades not included in current promotion. Please see Sales Associate for more details

REV022218

ELEVATIONS

The Coco



Contact Our Sales Team
757-689-7075
www.summitconstructionvirginia.com

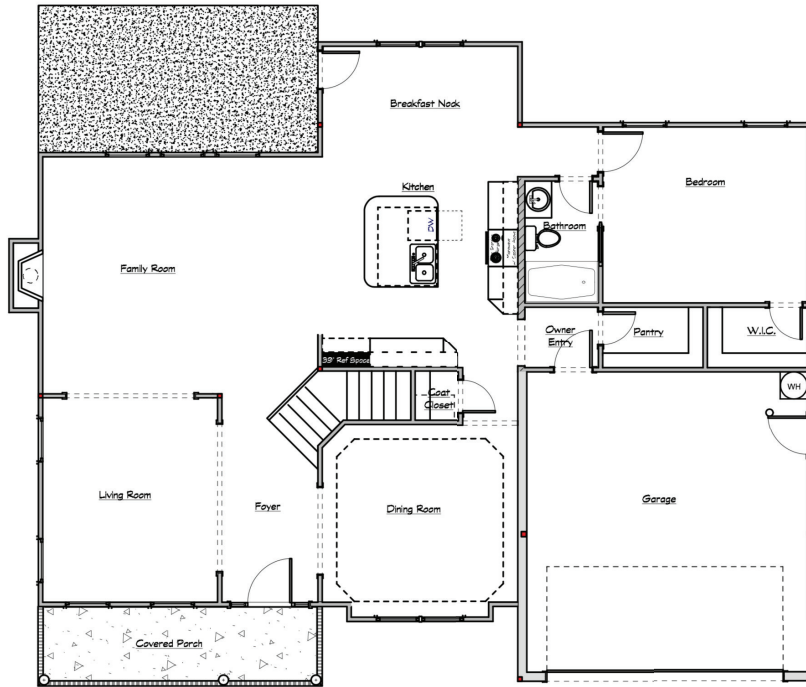


Some features may apply only to certain models or sizes may vary- please see agents for details. Builder reserves the right to substitute or changes on in all model types, prices, site plans, floor plans, materials and specifications and they are subject to change without notice. Actual home may vary from renderings and floorplans, the model or other homes. All standard selections to be made from builder's elected standards. All square footages listed area approximate and may vary from home to home. Photo similar. May contain additional upgrades not included in current promotion. Please see Sales Associate for more details

REV022218

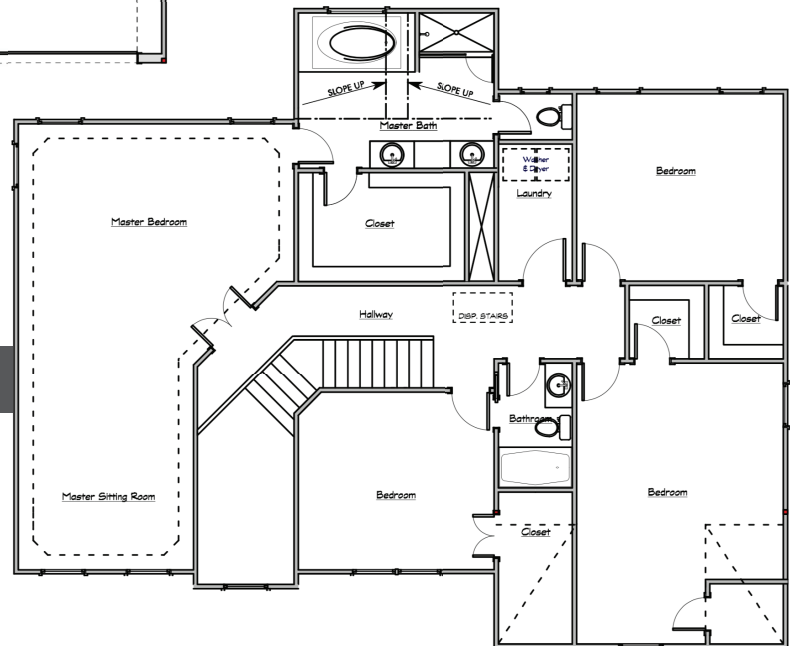
FLOOR PLANS

The Coco



FIRST FLOOR

SECOND FLOOR



Contact Our Sales Team
757-689-7075
www.summitconstructionvirginia.com



Some features may apply only to certain models or sizes may vary- please see agents for details. Builder reserves the right to substitute or changes on in all model types, prices, site plans, floor plans, materials and specifications and they are subject to change without notice. Actual home may vary from renderings and floorplans, the model or other homes. All standard selections to be made from builder's elected standards. All square footages listed area approximate and may vary from home to home. Photo similar. May contain additional upgrades not included in current promotion. Please see Sales Associate for more details

REV022218

ELEVATIONS

The Jackson



Contact Our Sales Team
757-689-7075
www.summitconstructionvirginia.com

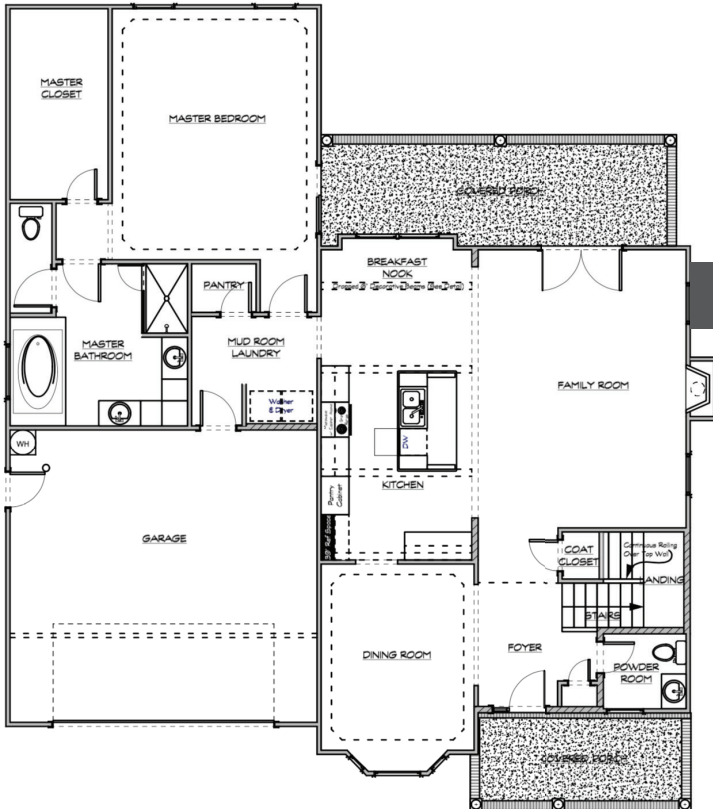


Some features may apply only to certain models or sizes may vary- please see agents for details. Builder reserves the right to substitute or changes on in all model types, prices, site plans, floor plans, materials and specifications and they are subject to change without notice. Actual home may vary from renderings and floorplans, the model or other homes. All standard selections to be made from builder's elected standards. All square footages listed area approximate and may vary from home to home. Photo similar. May contain additional upgrades not included in current promotion. Please see Sales Associate for more details

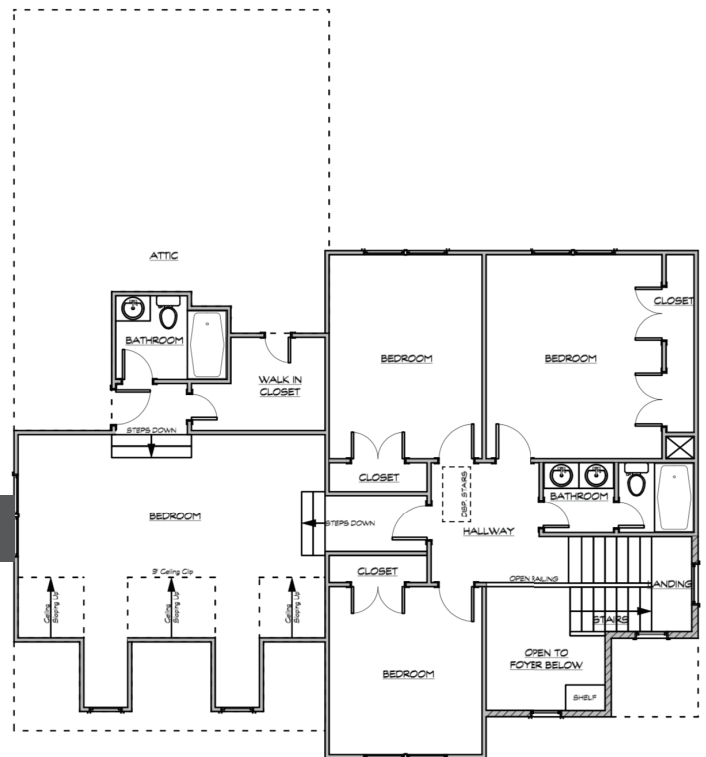
REV022218

FLOOR PLANS

The Jackson



FIRST FLOOR



SECOND FLOOR



Contact Our Sales Team
757-689-7075
www.summitconstructionvirginia.com



Some features may apply only to certain models or sizes may vary- please see agents for details. Builder reserves the right to substitute or changes on in all model types, prices, site plans, floor plans, materials and specifications and they are subject to change without notice. Actual home may vary from renderings and floorplans, the model or other homes. All standard selections to be made from builder's elected standards. All square footages listed area approximate and may vary from home to home. Photo similar. May contain additional upgrades not included in current promotion. Please see Sales Associate for more details

REV022218

THE APEX SERIES

Sylvia, Franklin, Grace & Chandler Floorplans



Exterior Detailing

- Maintenance Free Vinyl Siding
- Raised Solid Foundation with Brick Skirt On Front Elevation (Full Skirts In Albemarle River)
- Large Covered Front Porch
- Large Covered Rear Porch (on select models)
- Cambridge 30 Year Architectural Roof Shingles with Ridge Venting
- Raised Panel or Board & Batten Shutters on Front Windows
- Front & Rear Hose Bibs and Receptacles
- Decorative Raised Panel or Craftsman Style Garage Door* with Opener
- White Painted Porch Rails Installed As Required Per Code
- Vinyl Soffit
- Wrapped Exterior Trim
- Underground Utilities
- Sod Installed In Front Yard (Front Corners Of House To Curb)
- Security Deadbolts On Exterior Doors
- Broom Finished Concrete Patio

Flooring Surfaces

- Wide Plank Distressed Hardwood Installed in Foyer
- Tile Flooring In Master Bathroom
- Wall To Wall Carpeting In All Areas (Except Where Noted)
- No Wax Vinyl Floors in Kitchen, Hall Bath & Utility

Custom Interior Finishes

- Designer Light Fixture Package
- Ceiling Fans Installed In Family Room, Master Bedroom, & Third Location
- Crown Molding Master Bedroom
- Knockdown Texture Walls & Ceilings with Smooth Finish In Kitchen, Dining Room, & Baths
- 9' Ceilings First Floor
- Large Closets with Ventilated Shelving
- Washer & Dryer Hook Up Connections
- (1) Prewired HDMI & (4) Cat-6 Data Drops
- Granite Surround Gas Fireplace with Mantel
- Electrically Wired Smoke and CO Detectors with Battery Backup

Kitchen & Baths

- East Front Fully Maple Plywood Cabinets with Full Overlay Soft Close Doors, Full Extension Drawers, & 42" Upper Cabinets with Choice Of Finish
- 3cm Granite Installed In Kitchen & Master Bathroom Vanity
- Alcove Soaking Tub In Master Bathroom
- Oversized Tile Shower with Fiberglass Pan & Glass Enclosure In Master Bathroom
- Choice of Brushed Nickel or Bronze Lighting, & Cabinet Hardware
- Stainless Steel Kitchen Sink Faucet
- Chrome Finished Plumbing & Bathroom Hardware In All Bathrooms
- Adult Height Vanities In All Bathrooms
- Equal or Single Bowl Stainless Steel Sink
- Kenmore Stainless Steel Energy Star Appliance Package to Include: Smooth Top Free-Standing Electric Range, Built In Microwave with Vented Hood, & Dishwasher
- Garbage Disposal
- Cultured Marble Tops In Secondary Bathrooms
- Easy Care Fiberglass Tubs/ Showers in Secondary Bathrooms
- Ground Fault Electrical Interrupter Circuits in Kitchen, Baths, & Exterior Receptacles

Energy Savings & Other Features

- Single Zone Gas Heat with 92% AFUE Rating
- Single Zone Central Air Conditioning (Dual depending on floorplan size)
- Programmable Thermostats
- Poly-seal Air Infiltration Barrier
- Low-E/ Argon Filled Double Pane Tilt-In Multi-Chambered Windows
- Low Flow Water Saving Plumbing Fixtures
- All Low Energy LED Light Bulbs
- R-15 Insulation In Walls (Excludes Exterior Garage Wall) & R-38 In Ceilings
- 50 Gallon Gas Water Heater
- Insulated Energy Efficient Fiberglass Exterior Doors
- Insulated R-9 Foam-Core Garage Door
- Exclusive One Year Builder Warranty
- 10 Year Structural Warranty
- Termite Soil Treatment

*With Craftsman Package



Contact Our Sales Team
757-689-7075
www.summitconstructionvirginia.com



Some features may apply only to certain models or sizes may vary- please see agents for details. Builder reserves the right to substitute or changes on in all model types, prices, site plans, floor plans, materials and specifications and they are subject to change without notice. Actual home may vary from renderings and floorplans, the model or other homes. All standard selections to be made from builder's elected standards. All square footages listed area approximate and may vary from home to home. Photo similar. May contain additional upgrades not included in current promotion. Please see Sales Associate for more details

REV022218

ELEVATIONS

The Sylvia



Contact Our Sales Team
757-689-7075
www.summitconstructionvirginia.com

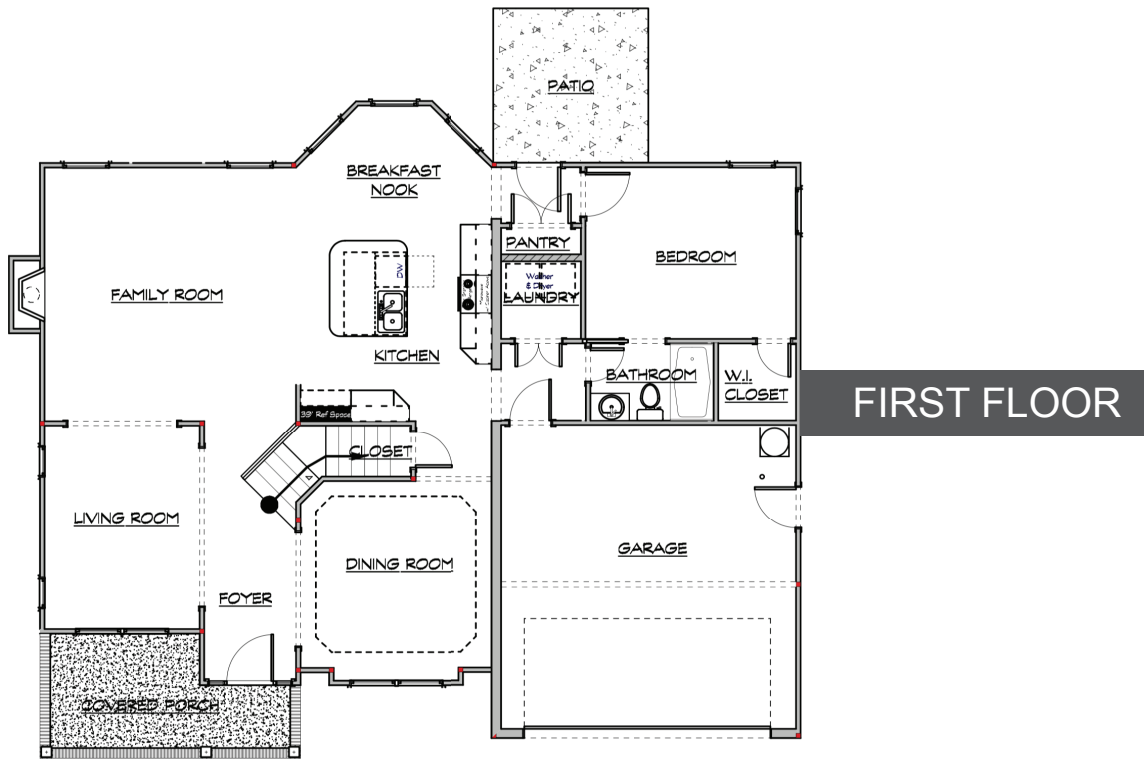


Some features may apply only to certain models or sizes may vary- please see agents for details. Builder reserves the right to substitute or changes on in all model types, prices, site plans, floor plans, materials and specifications and they are subject to change without notice. Actual home may vary from renderings and floorplans, the model or other homes. All standard selections to be made from builder's elected standards. All square footages listed area approximate and may vary from home to home. Photo similar. May contain additional upgrades not included in current promotion. Please see Sales Associate for more details

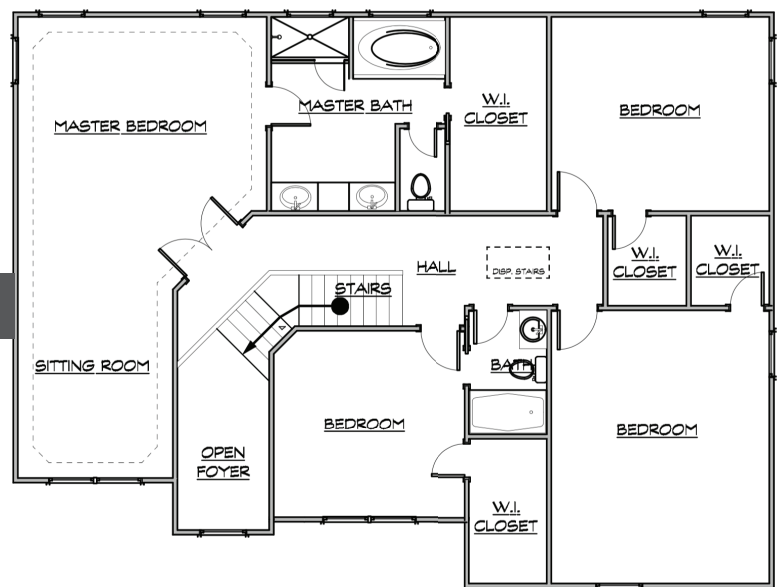
REV022218

FLOOR PLANS

The Sylvia



SECOND FLOOR



Contact Our Sales Team
757-689-7075
www.summitconstructionvirginia.com



Some features may apply only to certain models or sizes may vary- please see agents for details. Builder reserves the right to substitute or changes on in all model types, prices, site plans, floor plans, materials and specifications and they are subject to change without notice. Actual home may vary from renderings and floorplans, the model or other homes. All standard selections to be made from builder's elected standards. All square footages listed area approximate and may vary from home to home. Photo similar. May contain additional upgrades not included in current promotion. Please see Sales Associate for more details

REV022218

ELEVATIONS

The Franklin



Contact Our Sales Team
757-689-7075
www.summitconstructionvirginia.com

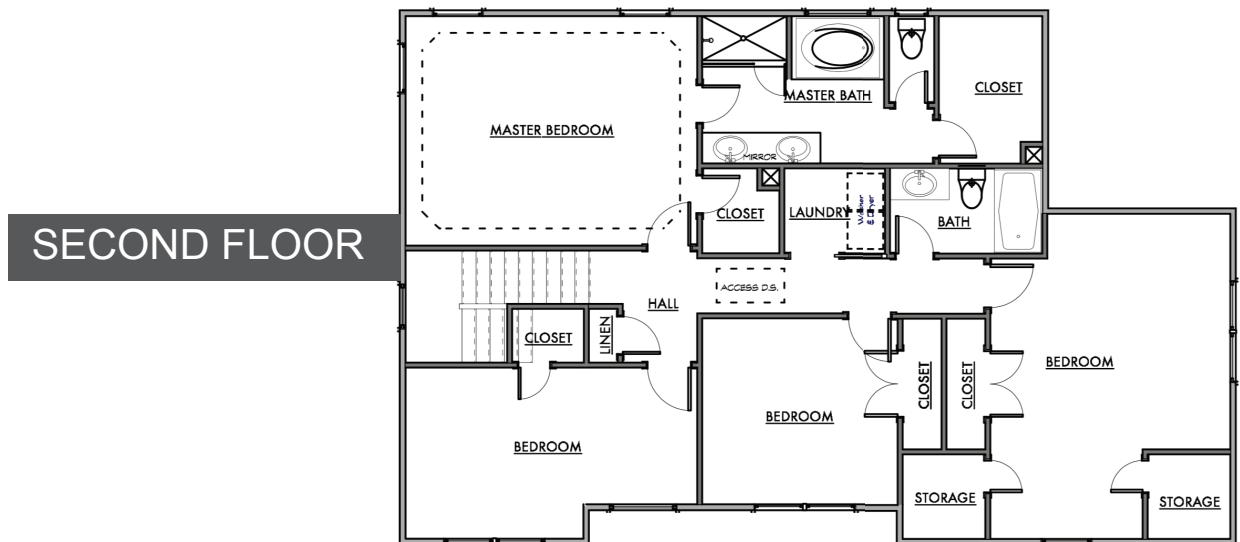
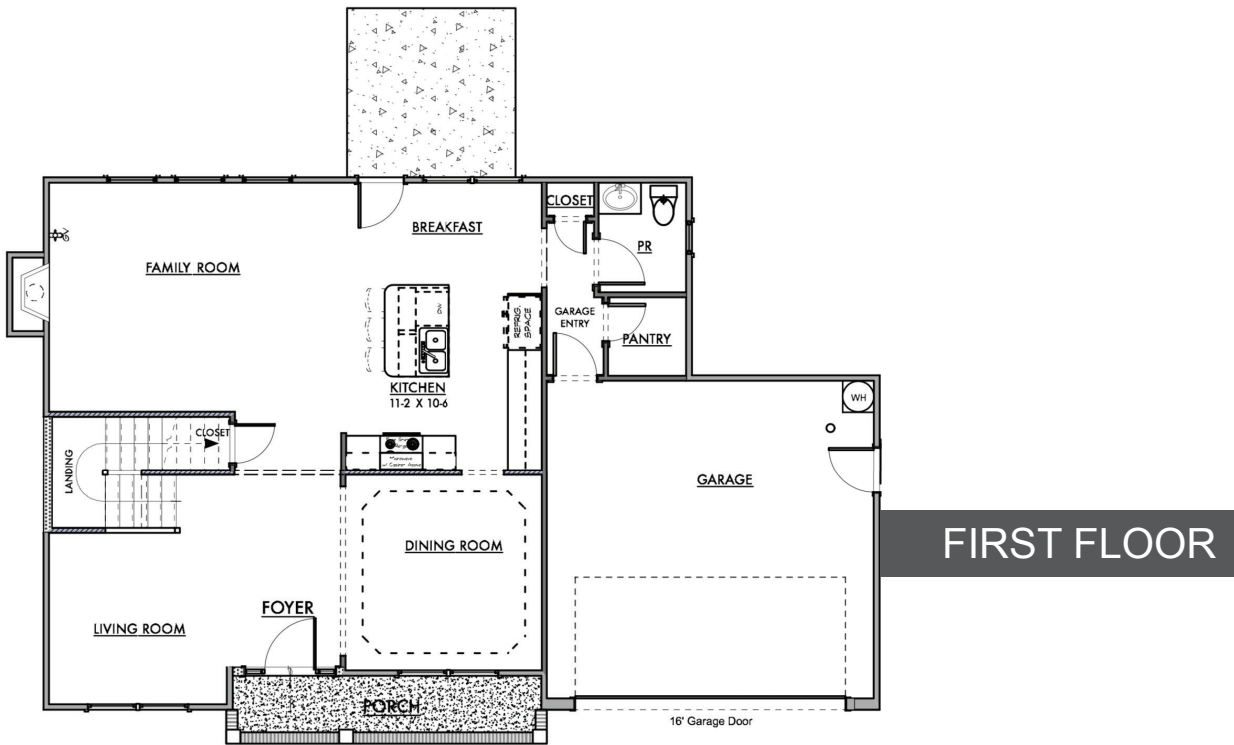


Some features may apply only to certain models or sizes may vary- please see agents for details. Builder reserves the right to substitute or changes on in all model types, prices, site plans, floor plans, materials and specifications and they are subject to change without notice. Actual home may vary from renderings and floorplans, the model or other homes. All standard selections to be made from builder's elected standards. All square footages listed area approximate and may vary from home to home. Photo similar. May contain additional upgrades not included in current promotion. Please see Sales Associate for more details

REV022218

FLOOR PLANS

The Franklin



Contact Our Sales Team
757-689-7075
www.summitconstructionvirginia.com



Some features may apply only to certain models or sizes may vary- please see agents for details. Builder reserves the right to substitute or changes on in all model types, prices, site plans, floor plans, materials and specifications and they are subject to change without notice. Actual home may vary from renderings and floorplans, the model or other homes. All standard selections to be made from builder's elected standards. All square footages listed area approximate and may vary from home to home. Photo similar. May contain additional upgrades not included in current promotion. Please see Sales Associate for more details

REV022218

ELEVATIONS

The Grace



Contact Our Sales Team
757-689-7075
www.summitconstructionvirginia.com

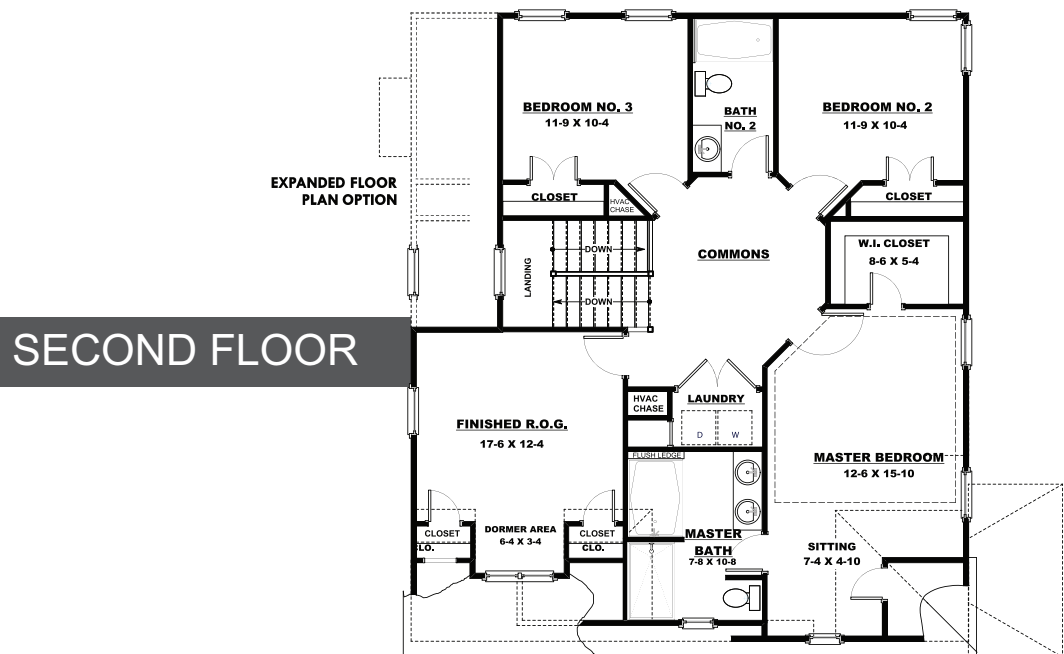
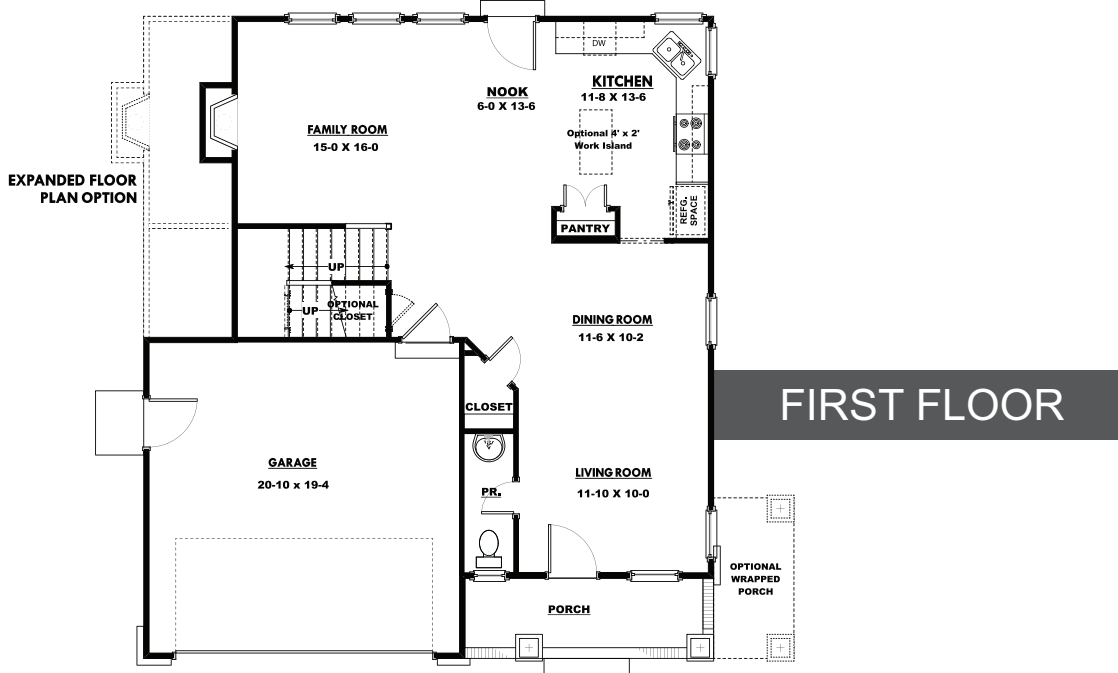


Some features may apply only to certain models or sizes may vary- please see agents for details. Builder reserves the right to substitute or changes on in all model types, prices, site plans, floor plans, materials and specifications and they are subject to change without notice. Actual home may vary from renderings and floorplans, the model or other homes. All standard selections to be made from builder's elected standards. All square footages listed area approximate and may vary from home to home. Photo similar. May contain additional upgrades not included in current promotion. Please see Sales Associate for more details

REV022218

FLOOR PLANS

The Grace



Contact Our Sales Team
757-689-7075
www.summitconstructionvirginia.com



Some features may apply only to certain models or sizes may vary- please see agents for details. Builder reserves the right to substitute or changes on in all model types, prices, site plans, floor plans, materials and specifications and they are subject to change without notice. Actual home may vary from renderings and floorplans, the model or other homes. All standard selections to be made from builder's elected standards. All square footages listed area approximate and may vary from home to home. Photo similar. May contain additional upgrades not included in current promotion. Please see Sales Associate for more details

REV022218

ELEVATIONS

The Chandler



Contact Our Sales Team
757-689-7075
www.summitconstructionvirginia.com

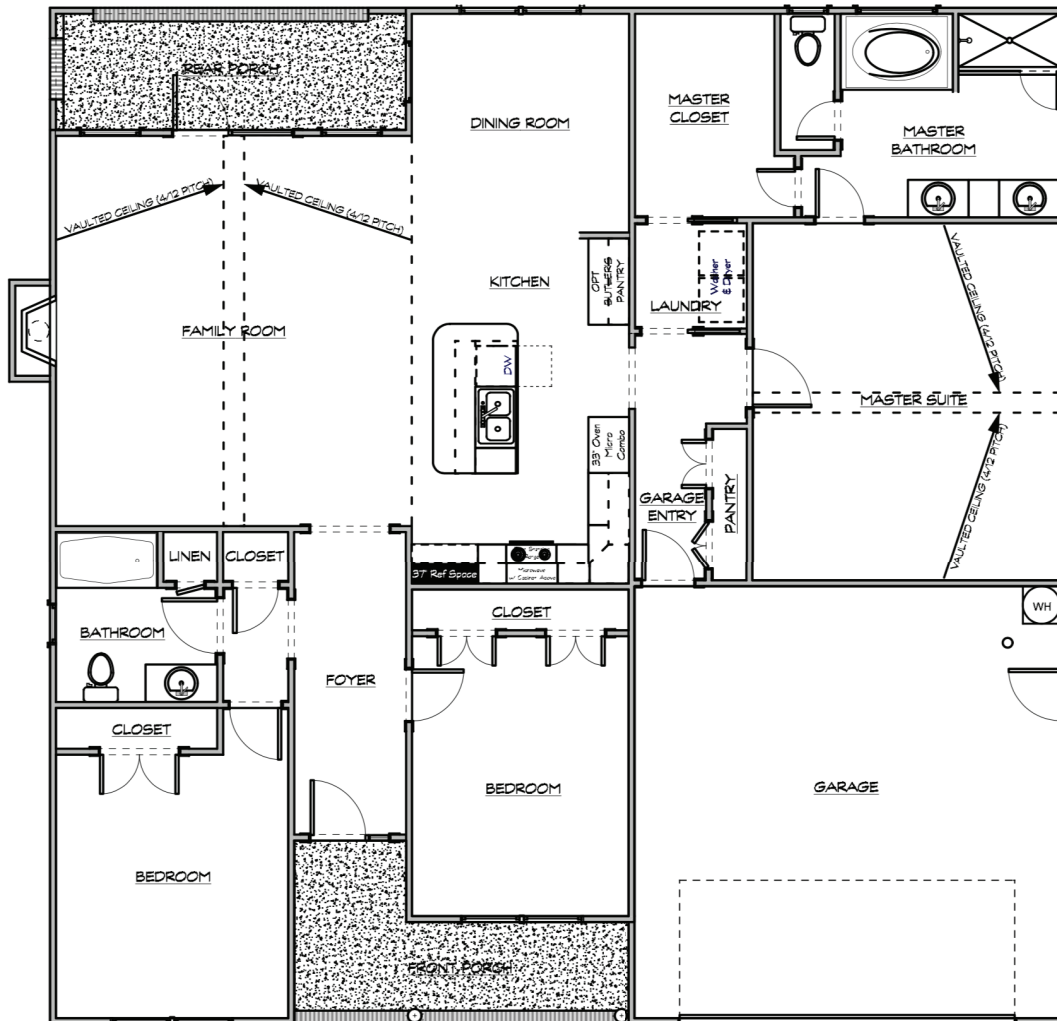


Some features may apply only to certain models or sizes may vary- please see agents for details. Builder reserves the right to substitute or changes on in all model types, prices, site plans, floor plans, materials and specifications and they are subject to change without notice. Actual home may vary from renderings and floorplans, the model or other homes. All standard selections to be made from builder's elected standards. All square footages listed area approximate and may vary from home to home. Photo similar. May contain additional upgrades not included in current promotion. Please see Sales Associate for more details

REV022218

FLOOR PLANS

The Chandler



Contact Our Sales Team
757-689-7075
www.summitconstructionvirginia.com



Some features may apply only to certain models or sizes may vary- please see agents for details. Builder reserves the right to substitute or changes on in all model types, prices, site plans, floor plans, materials and specifications and they are subject to change without notice. Actual home may vary from renderings and floorplans, the model or other homes. All standard selections to be made from builder's elected standards. All square footages listed area approximate and may vary from home to home. Photo similar. May contain additional upgrades not included in current promotion. Please see Sales Associate for more details

REV022218